



Bern University  
of Applied Sciences

# Anastasis

## Password-less key recovery via multi-factor multi-party authentication

Bachelor thesis

Field of Studies:	Computer science bachelor, IT-Security
Authors:	Dominik Samuel Meister, Dennis Neufeld
Supervisor:	Prof. Dr. Christian Grothoff
Expert:	Pierre-Yves Voirol
Date:	June 12, 2020

## Abstract

This thesis describes the design and implementation of Anastasis, a Free Software key escrow system that offers a practical way for ordinary users to bridge the conflicting requirements of keeping key material confidential and also available.

Anastasis fills this gap by providing a solution for secure recovery of secret keys, which works without passwords or other key material. This is achieved by splitting the key material across multiple independent Anastasis service providers, and enabling users to recover their master key by authenticating with each provider. Our protocol ensures that — without prior knowledge — the service providers learn nothing from the protocol except the minimum amount of data required to authenticate the user. Even that information is only disclosed at the time of authentication. Anastasis offers users control over the set of escrow providers, selection of authentication methods and desired policies for key recovery.

Many cryptographic protocols rely on keys being both kept secret, but also available for data processing. This thesis will highlight application domains for Anastasis and explore how to build a business around Anastasis.

## **Acknowledgements**

We wish to thank Christian Grothoff for the help and support he has provided throughout our work on Anastasis. He helped us resolve bugs and provided us feedback for the development. Additionally he helped us to edit our bachelor thesis documents.

We want to thank Pierre-Yves Voirol for agreeing to serve as an expert for the thesis. We also wish to thank the GNU Taler team, Vaishnavi Mohan, Nana Karlstetter and Leon Schumacher which supported us writing and presenting a funding proposal. Additionally, we want to thank Florian Dold which gave us feedback for our REST API documentation. We also want to thank Emmanuel Benoist for providing us the paper for MIDATA.

# Contents

<b>1. Introduction</b>	<b>2</b>
1.1. Principles . . . . .	2
1.2. Approach . . . . .	3
1.3. Use cases . . . . .	4
1.3.1. Encrypted email communication . . . . .	4
1.3.2. Digital currencies and payment solutions . . . . .	5
1.3.3. Password managers . . . . .	6
1.3.4. Hard drive encryption . . . . .	6
<b>2. Project management</b>	<b>7</b>
<b>3. Related work</b>	<b>8</b>
3.1. Cryptographic primitives . . . . .	8
3.1.1. Pseudo-randomness . . . . .	8
3.1.2. Hash function . . . . .	8
3.1.3. HMAC . . . . .	9
3.1.4. HKDF . . . . .	9
3.1.5. Argon2 . . . . .	9
3.2. Secret sharing . . . . .	10
3.2.1. Shamir’s secret sharing . . . . .	10
3.2.2. Verifiable secret sharing . . . . .	11
3.2.3. Distributed key generation . . . . .	11
3.3. Authentication . . . . .	11
3.3.1. Password authentication . . . . .	12
3.3.2. Secure question . . . . .	12
3.3.3. SMS authentication . . . . .	13
3.3.4. E-mail authentication . . . . .	13
3.3.5. VideoIdent . . . . .	14
3.3.6. PostIdent . . . . .	14
3.3.7. Biometric authentication . . . . .	14
3.4. Existing solutions for key recovery . . . . .	14
3.4.1. Coinbase . . . . .	15
3.4.2. MIDATA . . . . .	15
<b>4. Design</b>	<b>16</b>
4.1. Overview . . . . .	16
4.2. Adversary model . . . . .	19
4.3. Encryption of the core secret . . . . .	20
4.4. The recovery document . . . . .	20
4.5. Identity-derived encryption . . . . .	21
4.6. Authenticity of recovery documents . . . . .	24
4.7. Account signatures . . . . .	25

4.8.	Authenticity of truth . . . . .	26
4.9.	Availability considerations . . . . .	26
<b>5.</b>	<b>Implementation</b>	<b>27</b>
5.1.	System architecture . . . . .	28
5.2.	Server architecture . . . . .	29
5.2.1.	Database . . . . .	30
5.2.2.	Authentication methods . . . . .	31
5.3.	Client architecture . . . . .	32
5.3.1.	Crypto API . . . . .	33
5.3.2.	Client API . . . . .	35
5.3.3.	Service API . . . . .	39
5.4.	Application flow . . . . .	40
5.4.1.	Secret splitting . . . . .	40
5.4.2.	Secret recovery . . . . .	42
5.5.	Client Application Command Line Interface (CLI) . . . . .	43
5.5.1.	Anastasis splitter . . . . .	43
5.5.2.	Anastasis assembler . . . . .	45
5.6.	Libraries . . . . .	46
5.6.1.	GNU Taler . . . . .	46
5.6.2.	PostgreSQL . . . . .	47
5.6.3.	Libcurl . . . . .	47
5.6.4.	GNU Libmicrohttpd . . . . .	47
5.7.	Testing . . . . .	47
<b>6.</b>	<b>Business model</b>	<b>49</b>
6.1.	Executive summary . . . . .	49
6.2.	Market review and innovation potential . . . . .	49
6.3.	Business model canvas . . . . .	50
6.3.1.	Key partners . . . . .	50
6.3.2.	Key activities . . . . .	51
6.3.3.	Key resources . . . . .	51
6.3.4.	Value propositions . . . . .	51
6.3.5.	Customer relationships . . . . .	51
6.3.6.	Customer segments . . . . .	52
6.3.7.	Cost structure . . . . .	52
6.3.8.	Revenue streams . . . . .	52
6.4.	Project plan . . . . .	52
<b>7.</b>	<b>Conclusion and outlook</b>	<b>54</b>
<b>A.</b>	<b>REST API documentation</b>	<b>55</b>
<b>B.</b>	<b>Work journal</b>	<b>65</b>

<b>Glossary</b>	<b>74</b>
<b>References</b>	<b>75</b>

## List of Figures

1.	System architecture . . . . .	3
2.	Derivation of a user identifier . . . . .	4
3.	Master key in Bitcoin wallets . . . . .	5
4.	Anasasis project plan . . . . .	7
5.	Legend of Figure 6 . . . . .	16
6.	Secrets used in Anastasis . . . . .	17
7.	Key generation for signing of encrypted “Truth” data in Anastasis . . . . .	19
8.	Use of Argon2 to derive user attributes . . . . .	22
9.	Secret split process . . . . .	27
10.	System design overview . . . . .	28
11.	Anastasis server architecture . . . . .	29
12.	Anastasis database schema . . . . .	30
13.	Anastasis client architecture . . . . .	32
14.	Secret split process . . . . .	40
15.	Secret recovery process . . . . .	42
16.	Business project plan . . . . .	53

# 1. Introduction

Keys are used to encrypt high sensitive personal data and therefore they must be kept safely. Secure storage of private keys is known to be a difficult problem — especially for end-users with limited skills in system administration and insufficiently redundant hardware. A central objective for any solution is that only the legitimated owner of a key must have the possibility to recover a lost key.

But how can one create a confidential backup of a key? It certainly makes no sense to encrypt a key with a different password and then use the result as a backup. After all, this merely shifts the problem from the original key to the password, which is basically yet another key. So simply encrypting the key is not helpful. But without encryption, any copy of a key increases availability, but also the risk of the key’s confidentiality being compromised.

Most people have difficulties memorizing a high-entropy passphrase. Hence, existing key management “solutions” often reduce the problem of memorizing one or more high-entropy passphrases or keys to memorizing a single low-entropy passphrase. This is not a good solution, as the low-entropy passphrase undermines security.

In this thesis, we describe a software solution for the described problem using secret splitting. We call our solution “Anastasis”, which is a medical term for the prognosis of full recovery. We will call the information that Anastasis allows the user to recover their *core secret*.

## 1.1. Principles

For Anastasis we have following design objectives, in order of importance:

1. Anastasis must be Free Software<sup>1</sup>. Everyone must have the right to run the program, study the source code, make modifications and share their modifications with others.
2. Anastasis must not rely on the trustworthiness of individual providers. It must be possible to use Anastasis safely, even if a subset of the providers is malicious. Anastasis must minimize the amount of information exposed to providers and the network.
3. Anastasis must put the user in control: They get to decide which providers to use, and which combinations of authentication steps will be required to restore their core secret. The core secret always remains exclusively under the user’s control, even during recovery.
4. Anastasis must be economical viable to operate. This implies usability and efficiency of the system.
5. Anastasis must support a diverse range of use cases.

---

<sup>1</sup><https://www.fsf.org/>

## 1.2. Approach

### Secret sharing and recovery

Our approach to solve the problem of key recovery is to let the user split their core secret across multiple escrow providers (see Figure 1). To recover their core secret, the user has to authorize key the recovery, usually by passing an authentication check which they configured for the respective provider.

After successful authentication the user receives the secret shares and is able to re-assemble their core secret locally on their computer.

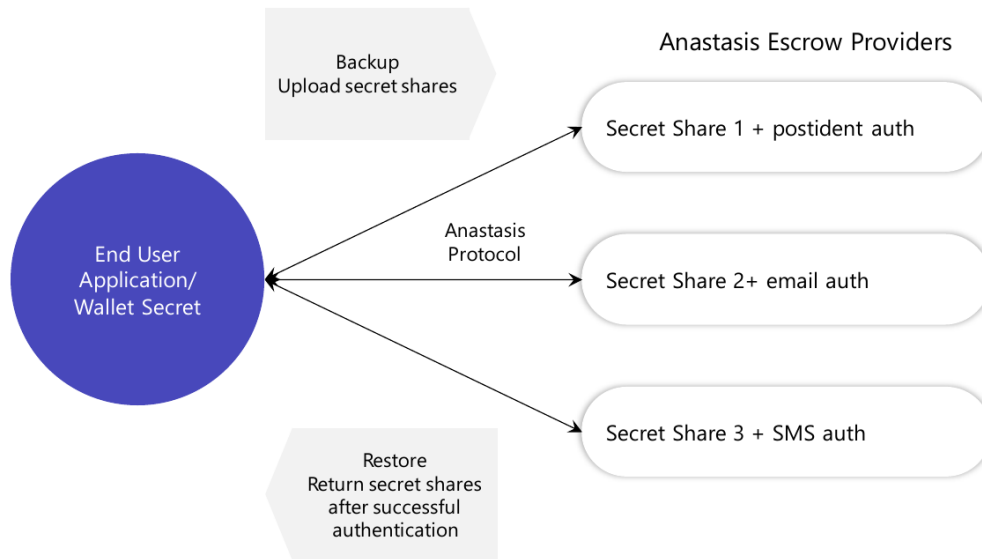


Figure 1: System architecture

### Derive user identifier

Every person has some hard to guess, semi-private and unforgettable inherent attributes such as name and passport number, social security number or AHV [1] number (in Switzerland). We use those attributes to improve the security and privacy provided by Anastasis. Basically, these attributes serve as weak key material, raising the bar for attackers without the availability disadvantages of passphrases — which users may forget. Anastasis derives a “user identifier” from such a set of unforgettable attributes (see Figure 2).





Figure 2: Derivation of a user identifier

### Encrypt and encrypt and encrypt

Anastasis uses several layers of encryption. First, the user’s core secret is encrypted with a master key. The master key is encrypted with various policy keys. The policy keys are derived from various secrets which are encrypted and distributed across various providers together with information about the desired recovery authorization procedure. This last encryption is done based on keys derived from the user identity. These many layers of encryption are designed to distribute trust and to minimize or delay information disclosure.

### Private payments are integrated

The Anastasis protocol includes provisions for privacy-preserving electronic payments to the service providers, as well as resource limitations to protect service providers against resource exhaustion attacks. This ensures that it should be possible to operate the service commercially.

## 1.3. Use cases

There are several applications which are in need of a key escrow system like Anastasis. Some of them shall be introduced in this section.

### 1.3.1. Encrypted email communication

For email encryption using Pretty Good Privacy (PGP) [2] users need a private key which is typically stored on the device running PGP. PGP uses a “Web of trust” to establish the authenticity of keys.

Pretty Easy privacy (short p≡p) is “a cyber security solution which protects the confidentiality and reliability of communications for citizens, for public offices and for enterprises” [3]. It secures communication via email by providing end-to-end encryption similar to PGP. A major difference is that p≡p uses opportunistic encryption and so-called

trustwords to establish authenticity to avoid usability and privacy problems associated with the “Web of trust” [4].

The impact of losing control over the private key is similar in both systems:

- If the private key becomes unavailable, all emails which were encrypted to that key become unreadable. Furthermore, the user would likely need to rebuild their “Web of trust”.
- If the private key is disclosed to an adversary, they might be able to decrypt that user’s encrypted emails – which may go back years and could include highly sensitive information. An adversary could also use the private key to send cryptographically signed emails pretending to be the user.

### 1.3.2. Digital currencies and payment solutions

Another application relying on a core secret are cryptocurrencies like Bitcoin. Each user of Bitcoin needs an electronic wallet which stores and protects the private keys of the user. Those private keys legitimate its owners to spend the bitcoins corresponding to the keys. [5]

Loosing Bitcoin wallet keys means losing all of the corresponding Bitcoins. The reader may be familiar with stories from the mass media about people who claim to have lost their key to their electronic wallet and therefore huge sums of cryptocurrency [6]. Backup systems are essential to avoid such cases.

The following graphic illustrates the keys used in Bitcoin wallets. In this case, the core secret Anastasis would store is the “master key”  $m$ :

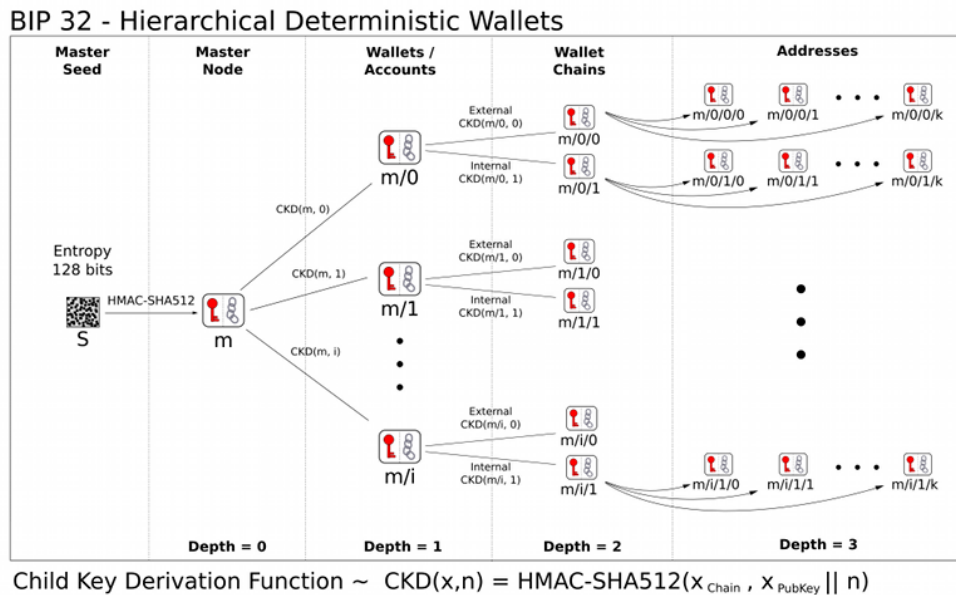


Figure 3: Master key in Bitcoin wallets (from [7])

GNU Taler<sup>2</sup> is a new electronic instant payment system for privacy-friendly online transactions. The GNU Taler digital wallets are storing electronic coins, and backups are protected with a key. Losing the backup key means losing all the money stored in the wallet, as well as the transaction history kept in the wallet.

The European Central Bank (ECB) informally informed Taler Systems SA about the requirement for electronic wallets denominated in Euros to support password-less data recovery to ensure users would not lose their electronic funds if their device were to be damaged or lost.

This was the key impulse which motivated us to create Anastasis, with the goal of enabling recovery of GNU Taler's backup keys via Anastasis.

### 1.3.3. Password managers

To avoid using low-entropy passwords and password reuse, some people use software password managers like KeePass<sup>3</sup>. Such password managers relieve you of the burden of remembering many passwords and in most cases allow the generation of high-entropy passwords.

The user only has to remember the password for the password manager. However, as discussed before, this is still a major problem:

- On the one hand, users could use an insecure, easy to remember password. In this case, an adversary gaining control over the password manager's database could break into all systems secured by keys managed by the password manager.
- On the other hand, users could use a complex, high-entropy passphrase. However, if that passphrase is forgotten, users face the loss of all passwords and thus also all online services that the password manager controlled for them.

Anastasis can be used to enable recovery of strong passphrases, such as those that should be used to secure password managers.

### 1.3.4. Hard drive encryption

Data at rest is often protected using (full) drive encryption, for example using software like LUKS<sup>4</sup>. For encryption and decryption of the drive a combination of key files, passphrases and Trusted Platform Modules (TPMs) [8] are used.

Anastasis can be used to backup and restore such key files or passphrases.

---

<sup>2</sup><https://taler.net/de/>

<sup>3</sup><https://keepass.info/>

<sup>4</sup><https://guardianproject.info/archive/luks/>

## 2. Project management

This section describes the project planing of Anastasis. A detailed reflection on the work on Anastasis is in the work journal in the appendix.

Figure 4 shows our original project plan for implementing Anastasis and writing our Bachelor's thesis.

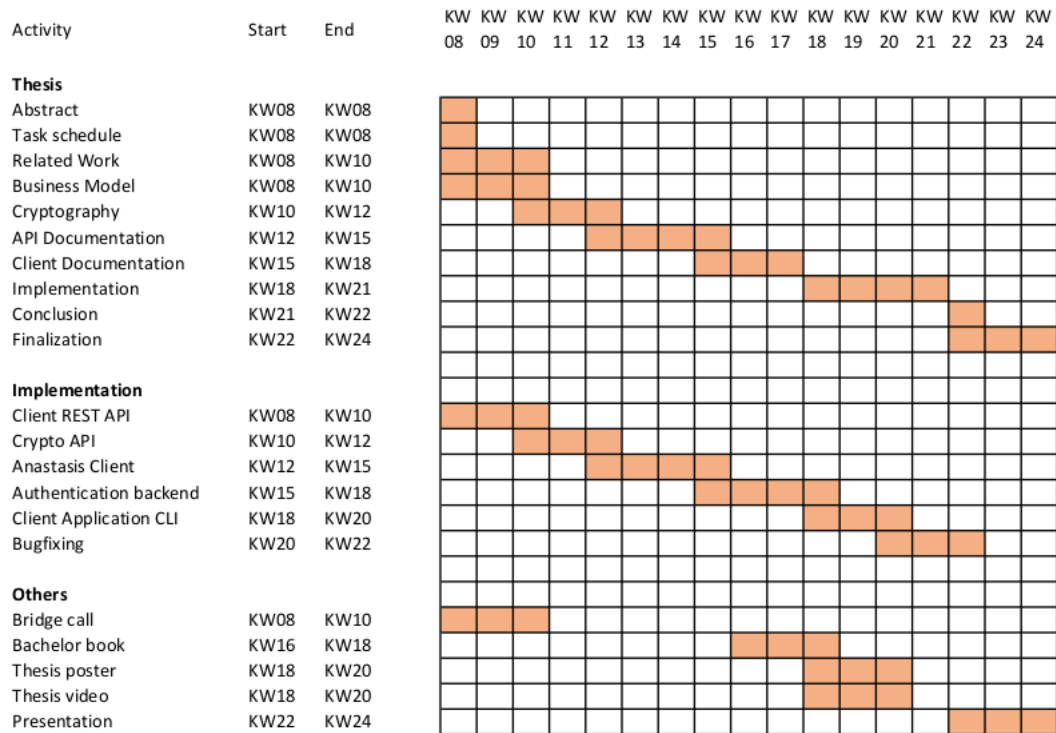


Figure 4: Anasasis project plan

We were able to write our thesis roughly according to our original project plan. The software development took a bit longer, as we had to relearn certain aspects of the C language and understand many APIs used by the overall system. Because of this, we cut the implementation of the complex authentication method from the plan.

On the flip side, due to the interest of many groups and businesses in Anastasis, we invested more time than expected into the business part, including the pursuit for external funding, which we hope will enable us to launch a successful business with Anastasis.

## 3. Related work

This chapter explains some important cryptographic functions and which are used in Anastasis or related to our work. We also describe issues with existing solutions in this domain.

### 3.1. Cryptographic primitives

#### 3.1.1. Pseudo-randomness

A pseudo random generator (PRG) is an algorithm producing an infinite sequence of bits for which there is no efficient algorithm to distinguish it from a truly random sequence [9]. The algorithm “takes as input a short, perfectly random seed” [9] which determines the output value.

A pseudo random function (PRF) is a deterministic function which output is finite and indistinguishable from a true random function. [10] PRFs can be constructed using PRGs. [11]

#### 3.1.2. Hash function

Hash functions ”compress a string of arbitrary length to a string of fixed length [...]” [12]. The output of a hash function often is called a ”hash”. Hash functions in general should be very fast to compute. Cryptographic hash functions need to fulfil additional security requirements which are

- (first) pre-image resistance,
- second pre-image resistance,
- collision resistance,
- pseudo randomness, and the
- avalanche effect.

Pre-image resistance, also called the “one way property”, means that for a given hash function  $H$  and a hash value  $H(x)$ , it is computationally infeasible to find  $x$ . [13] For example, since in Anastasis we derive the key to encrypt the personal details required for user authentication (e.g. the mobile phone number for authentication via SMS) using functions based on hash functions (see HKDF), it is very important that you cannot derive the corresponding input values from the key.

The second pre-image resistance is described by following: For a given hash function  $H$  and a hash value  $H(x)$ , it is computationally infeasible to find  $x$  and  $x'$  such that  $H(x) = H(x')$  and  $x \neq x'$ . [13] In Anastasis hash functions also are involved in signing our so called recovery document. Hence an attacker should not be able to create a malicious recovery document with the same hash value as the original one.

The definition of collision resistance slightly differs from the second pre-image resistance: For a given hash function  $H$ , it is computationally infeasible to find a pair  $x, y$  such that  $H(x) = H(y)$  [13]. Anastasis does not rely upon collision resistance in its use of hash functions.

A cryptographic hash function should also behave as a pseudo random function. This means that although a hash function is purely deterministic, the output must not be predictable.

The avalanche effect describes the property of an algorithm that causes a significant change of the output value, usually a bit flipping of more than half the output is desired, if the input is changed slightly (for example, flipping a single bit). [14] The more bits are flipping in the output value the higher the entropy of the randomness of the hash function.

There are many applications for cryptographic hash functions. For example, you can store the hash value of a passphrase instead of the passphrase itself in a computer to protect the passphrase. Another important application is verification of message integrity: Before and after transmission of a message one can calculate the hash values of it and compare hashes later to determine if the message changed during transmission.

In Anastasis we use SHA-512 [15] for fast hash functions.

### 3.1.3. HMAC

When it comes to integrity of messages during communication of two parties over an insecure channel Keyed-Hash Message Authentication Codes (HMAC) are used as check values. An HMAC function is based on a hash function and takes two arguments, a key  $K$  and a message  $M$ :

$HMAC_K(M) = H(K \oplus opad, H(K \oplus ipad, M))$  with "ipad" and "opad" being constants which fill up the key  $K$  to the blocksize of the hash function [16]. The blocksize of a modern hash function like SHA-512 is 64 bytes.

### 3.1.4. HKDF

A HKDF is a key derivation function (KDF) based on HMAC. A KDF "is a basic and essential component of cryptographic systems: Its goal is to take a source of initial keying material, usually containing some good amount of randomness, but not distributed uniformly or for which an attacker has some partial knowledge, and derive from it one or more cryptographically strong secret keys" [17].

Anastasis uses HKDFs based on SHA-512 to derive symmetric keys for encryption.

### 3.1.5. Argon2

Hash functions like SHA-512 are designed to be very fast. Therefore passwords being stored using this kind of hash are vulnerable to dictionary attacks with new hardware architectures like FPGAs [18] and dedicated ASIC [19] modules. But those architectures "experience difficulties when operating on large amount of memory" [20].

In contrast to standard hash functions there are functions designed to be memory-hard. Argon2 is such a memory-hard function that won the Password Hashing Competition in 2015. It minimizes time-memory tradeoff [21] and thus maximizes the costs to implement an ASIC for given CPU computing time [20]. Aside from the fact that Argon2 makes dictionary attacks much harder, Argon2 can be used for another feature too: Memory-hard schemes like Argon2 are very useful for key derivation from low-entropy sources [20].

Argon2 is used in Anastasis to derive an identifier for the user from the user’s attributes, which serve as low-entropy inputs.

## 3.2. Secret sharing

Secret splitting, also known as secret sharing, is a technique for distributing a secret amongst multiple recipients. This is achieved by assigning a share of the secret to each recipient. By combining a sufficient number of those shares, it is possible to reconstruct the secret. In a secret sharing theme the recipients of a share often are called *players*. The figure who gives a share of the secret to the players is called *dealer*.

In Anastasis the user is the trusted dealer who splits the secret and also reconstructs it.

### 3.2.1. Shamir’s secret sharing

The algorithm “Shamir’s secret sharing” is probably the most well known secret sharing scheme. It “divide[s] data D into n pieces in such a way that D is easily reconstructible from any k pieces, but even complete knowledge of  $k - 1$  pieces reveals absolutely no information about D” [22].

Shamir’s simple secret sharing scheme has two key limitations. First, it requires a trusted dealer who initially generates the secret to be distributed, and second the shares are not verifiable during reconstruction. Therefore, malicious shareholders could submit corrupt shares to prevent the system from reconstructing the secret — without these corrupt shareholders being detectable as malicious. Furthermore, the dealer distributing the shares could be corrupt and distribute some inconsistent shares to the others. Also, in some scenarios the dealer cannot be trusted with the knowledge of the original core secret.

Additionally, Shamir’s secret sharing is inflexible because it is a simple  $k$ -out-of- $n$  threshold scheme. While this makes the scheme reasonably efficient even for big values of  $n$ , efficiency with respect to a large number of escrow providers and authorization procedures is not important for Anastasis: it is already difficult to conceive users providing more than a handful of authentication methods (Section 3.3 describes common choices.)

For Anastasis, we thus decided to opt for more flexible approach that allows complex policies for recovery authorization, instead of only  $k$ -out-of- $n$ . Each user of Anastasis is also able to decide which combinations of *players*, which in case of Anastasis are the escrow providers, shall be permitted.

### 3.2.2. Verifiable secret sharing

Verifiability can be achieved by using so called commitment schemes like the Pederson commitment. It allows “to distribute a secret to  $n$  persons such that each person can verify that he has received correct information about the secret without talking with other persons” [23]. In his paper “A Practical Scheme for Non-interactive Verifiable Secret Sharing” [24], Paul Feldman combines the two schemes Shamir Secret Sharing and Pederson commitment. His algorithm for verifiable secret sharing (VSS), allows each recipient to verify the correctness of their share. But like in the Shamir Secret Sharing scheme, the dealer in the VSS scheme also can’t be trusted with the knowledge of the original core secret.

Because in Anastasis each user can act as their own trusted dealer, the shares must not be verified and therefore Anastasis do not need any form of VSS.

### 3.2.3. Distributed key generation

Distributed key generation (DKG) algorithms solve the problem of needing a trustworthy dealer by instead relying on a threshold of honest persons for key generation. Contrary to the above-mentioned schemes, in distributed key generation algorithms every participant is involved in key generation. The Pederson DKG is such “a secret sharing scheme without a mutually trusted authority” [25]. Basically, this DKG works as follows: First, each involved party generates a pre-secret and distributes it to all parties using the verifiable secret sharing scheme of Feldman. Afterwards, each party recombines the received shares, including its own pre-secret, to a share of the main secret. The main secret can be reconstructed by summing up each recombination of the shared pre-secrets.

Because in Anastasis each user can act as their own trusted dealer, we also do not worry about the dealer learning the user’s key and hence Anastasis do not need any form of DKG.

## 3.3. Authentication

To build a secure authentication procedure, today multi-factor authentication is the standard [26]. A single authentication method by itself is usually vulnerable. Multi-factor authentication combines multiple authentication procedures to enhance the security of the system.

During procedure of some authentication methods a so called token is sent to the user. The user than has to provide the token to authorize.

The token should be a randomly generated passphrase which has at least 128 bits of entropy. It is best practice for a token to have an expiration time, although this is not relevant for security of Anastasis.

Anastasis is designed to use a wide range of authentication methods to authenticate its users. Even though the user in Anastasis is free to specify only one authentication method, we strongly recommend the use of multi-factor authentication, typically using different authentication methods at different providers.



A short overview of common authentication methods and issues with each of them is presented here.

### 3.3.1. Password authentication

Password authentication is probably the most widely used authentication procedure. But as studies show the procedure has its drawbacks [27]. For example the handling of the passwords, like storage or transmission, often is done poorly. Another problem is that the user must remember his password. Therefore the password is limited to the capabilities of the user to remember it. Thus people tend to use passwords with low entropy. Those passwords are vulnerable to brute force attacks or dictionary attacks. Another problem using passwords is the possibility of replay attacks: A password can be stolen by an eavesdropper during online transmission and used by the attacker.

Because passwords can be forgotten, we do not recommend using this method for provider-authentication in Anastasis. Users could easily add a passwords into their set of “invariant” attributes used to derive the identity key, and then would automatically obtain all of the possible benefits (and drawbacks) from using a password. Specifically, they must make sure that the password cannot be forgotten, even if it means that the password has low entropy.

### 3.3.2. Secure question

Similar to password authentication the use of an authentication method based on a secure question requires the user to remember the correct answer to a specific question. The difference here is that the question provides a context that helps the user to remember the answer and the user does not necessarily need to memorize something new [28].

There are several variations to implement authentication using a secure question:

- The questions and answers are predefined.
- Just the questions are predefined.
- The user is free to create custom questions and answers.

The first option is the easiest one. But predefineding the answers has the disadvantage being impersonal and inflexible. The questions must inevitably be general, which may allow an attacker to obtain answers by collecting public information about the victim, or even simply solving the challenge by brute-forcing trying all possible choices. Therefore the first option is not ideal.

The second option is more applicable but has some drawbacks, too. For example there may be questions whose answers have multiple syntactic representations (for example, “St.” versus “Street”) [28]. Another problem could be a question whose answer may change over time. Asking for the favourite actor for example could be problematic. In addition, there is a challenge to define questions for all kind of people. Some people for example could not answer to the question, what the name of their pet is, because they do not have one.

In case of the third option, we have all of the issues of the second one, but additionally there is the difficulty for the user to ask creative questions. A good question should only be answerable by the user. Also, it would be perfect to have the attacker on the wrong track by using ambiguous questions with word plays the adversary cannot easily comprehend.

Authentication using a secure question requires checking the validity of an answer that may include private personal information. Consequently, Anastasis does not store the answers of secure questions in cleartext. Instead, Anastasis only stores the hash value of a (salted) answer. Thus the user only has to provide the hash value of the answer and not disclose the answer itself.

### **3.3.3. SMS authentication**

Another way to authenticate users that have a mobile phone is to use SMS authentication. The most popular use case is the so called Mobile TAN used to authorize online banking transactions. A Mobile TAN is an SMS based One-Time Password (OTP), short SMS OTP. SMS OTPs “were introduced to counter phishing and other attacks against authentication and authorization of Internet services” [29].

However, SMS authentication is not very secure, as it relies on the security of the mobile network, which has various vulnerabilities [30]. There are also specialized mobile trojans which are used to eavesdrop on these messages directly on the user’s mobile device.

While likely not as sensitive as answers to security questions, we still consider user’s phone numbers as private information that deserves protection. Naturally, a service authenticating the user needs the phone number to send a message to the user during SMS authentication.

Hence, Anastasis providers have to learn the phone number during SMS authentication. However, we can use cryptography to ensure that the provider only gets the keys to decrypt the phone number when the authentication process is started by the user as part of a recovery operation. Thus, a compromise of the provider’s database would not directly reveal the phone numbers to the attacker.

### **3.3.4. E-mail authentication**

Authentication by email is similar to SMS authentication. Here, the user receives a token by email and has to provide it during the authentication process.

It is important that the email should not already contain the requested information, so in the case of Anastasis the keyshare. This is because the SMTP protocol used for email offers no hard security assurances. In particular, the email is likely to be stored for a indefinite period in the user’s mailbox, which could be easily compromised and read by a mailbox provider. [31]

Like with SMS authentication, Anastasis also encrypts the email addresses when they are stored at the provider. The user has to provide the corresponding decryption key to the server during the authentication process.

### 3.3.5. VideoIdent

VideoIdent uses a video chat to verify the identity of a user. The user needs to show their face using a camera to an employee of the VideoIdent service. The service then verifies the identity of the user by comparing the video stream to a picture of the user [32].

Prerequisites for error-free identification are a video camera with good video quality and a high-resolution image of the user on which the face can be clearly seen. The user should also not change their outward appearance too much over time. For example, growing or trimming a beard could lead to the VideoIdent-service employee not being able to recognise a user with sufficient confidence.

For an attacker who looks similar to the user, there is a chance that the employee incorrectly confirms the identification.

In Anastasis, pictures of users for VideoIdent authentication are considered private information stored encrypted at the providers. During the authentication process, the user has to provide the correct key for decryption to the service.

### 3.3.6. PostIdent

It is also possible to send a verification code to the user by physical mail. A major drawback of this authentication method is that it has high latency, and there is also the possibility that physical mail gets intercepted or lost during transmission.

Anastasis providers using PostIdent would not store the address of their users in cleartext. Instead the address is encrypted by the user and the provider would receive the key to decrypt the address only during the authentication process.

### 3.3.7. Biometric authentication

Another way of authenticating is the biometric approach [33]. Biometric authentication is based on “something you are”, like your iris or your fingerprint.

Biometric authentication is highly problematic because the attributes are invariant and frequently shared involuntarily. Unlike passphrases or phone numbers, users cannot change their genome or fingerprint in case their private biometric information is exposed. Furthermore, there are credible threats against biometric authentication, in particular there are documented inexpensive attacks against fingerprint and iris scan authentication. For example, a member of the German CCC e.V. was able to generate replicas from Angela Merkel’s iris and Ursula von der Leyen’s fingerprint [34].

## 3.4. Existing solutions for key recovery

This section introduces some existing solutions for key recovery and why they are problematic.

### 3.4.1. Coinbase

Coinbase<sup>5</sup> is a global digital asset exchange company, providing a venue to buy and sell digital currencies. Coinbase also uses wallets secured with private keys. To recover this private key the user has to provide a 12 words recovery phrase.

Coinbase offers a solution to securely deposit this recovery phrase onto the users Google Drive or iCloud. [35] The security here lies within the Google or iCloud account and another password used to encrypt the security phrase. The problem here is that this approach undermines confidentiality, as encrypting a strong key with a weak key simply reduces the security to that of the weaker key.

### 3.4.2. MIDATA

MIDATA is a project that aims to give patients back control over their medical data and to enable them to share their data only with those they trust.<sup>6</sup> In case a patient lost their device with the MIDATA-application and also forgot their MIDATA password, MIDATA provides a key recovery system using the Shamir Secret Sharing scheme (as described in Section 3.2.1).

In their case, a few “persons working at MIDATA have generated a public-private key pair (Recovery key) on their own computer. They keep the private recovery key for themselves and never share it. The public keys are made public so that the apps can also access them” [36]. Using Shamir’s Secret Sharing the MIDATA application splits the user’s app private key into 5 parts which are encrypted with one of the published recovery keys. The encrypted parts are then stored into the MIDATA server. During the recovery process at least two of the 5 parts need to be decrypted by the persons owning the private key part of the recovery key. “The decrypted parts are sent to the server and *the server* may now reconstruct the app private key if enough parts of the key have been decrypted” [36]. (Emphasis ours.)

The security of MIDATA as described in “Patient empowerment in IoT for eHealth - How to deal with lost keys?” [36] is broken in three ways:

1. The password is reconstructed at *the server*, not on the patients device. An administrator of the server could thus access the recovered password at that time. It would be better to reconstruct the password only on the patients device.
2. It is not clear which authentication methods the persons working for MIDATA use for their decisions and activities regarding the key recovery. The business process used here could be vulnerable, and it is not clear whether multi-factor authentication is used. As a result, we worry that it may be possible for an attacker to successfully use social engineering via email (or other means) to illegitimately trigger a recovery process.
3. The MIDATA system also does not offer any trust agility [37]. The user is forced to accept the 2-out-of-5 rule with trustees provided by MIDATA.

---

<sup>5</sup><https://www.coinbase.com/>

<sup>6</sup><https://www.midata.coop/>

## 4. Design

Anastasis is a service that allows the user to securely deposit a *core secret* with an open set of escrow providers and recover it if the secret is lost. The core secret itself is protected from the escrow providers by encrypting it with a *master key*. The main objective of Anastasis is to ensure that the user can reliably recover the core secret, while making this difficult for everyone else. Furthermore, Anastasis supports situations where the user is unable to reliably remember any secret with sufficiently high entropy, so Anastasis does not simply encrypt using some other key material in exclusive possession of the user.

To uniquely identify users and to provide a first layer of protection, an “unforgettable” identifier is used. This identifier should be difficult to guess for anybody but the user. However, the identifier is not expected to have sufficient entropy or secrecy to be cryptographically secure. Examples for such an identifier would be a concatenation of the full name of the user and their social security or passport number(s). For Swiss citizens, the AHV number could also be used.

### 4.1. Overview

The Figure 5 shows the legend for the illustration of the Anastasis key usage shown in Figure 6 on page 17 and in Figure 7 on page 19. The Figure 6 gives an overview of the keys used in Anastasis. It also shows how they are created and used. Figure 7 shows how the keys to sign the (encrypted) truth data used during authentication are generated. The truth seed(s) used in Figure 7 are part of the recovery document.

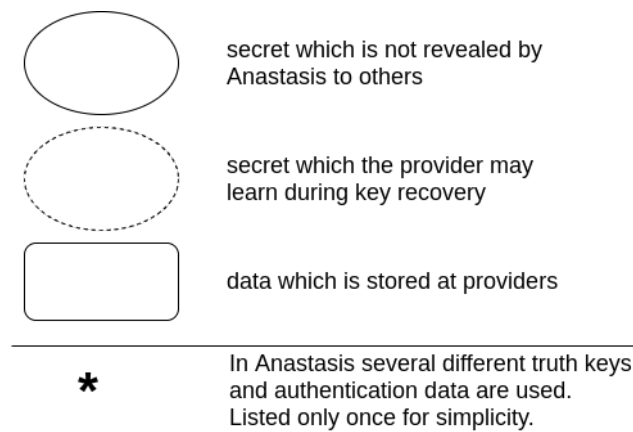


Figure 5: Legend of Figure 6  
on page 17

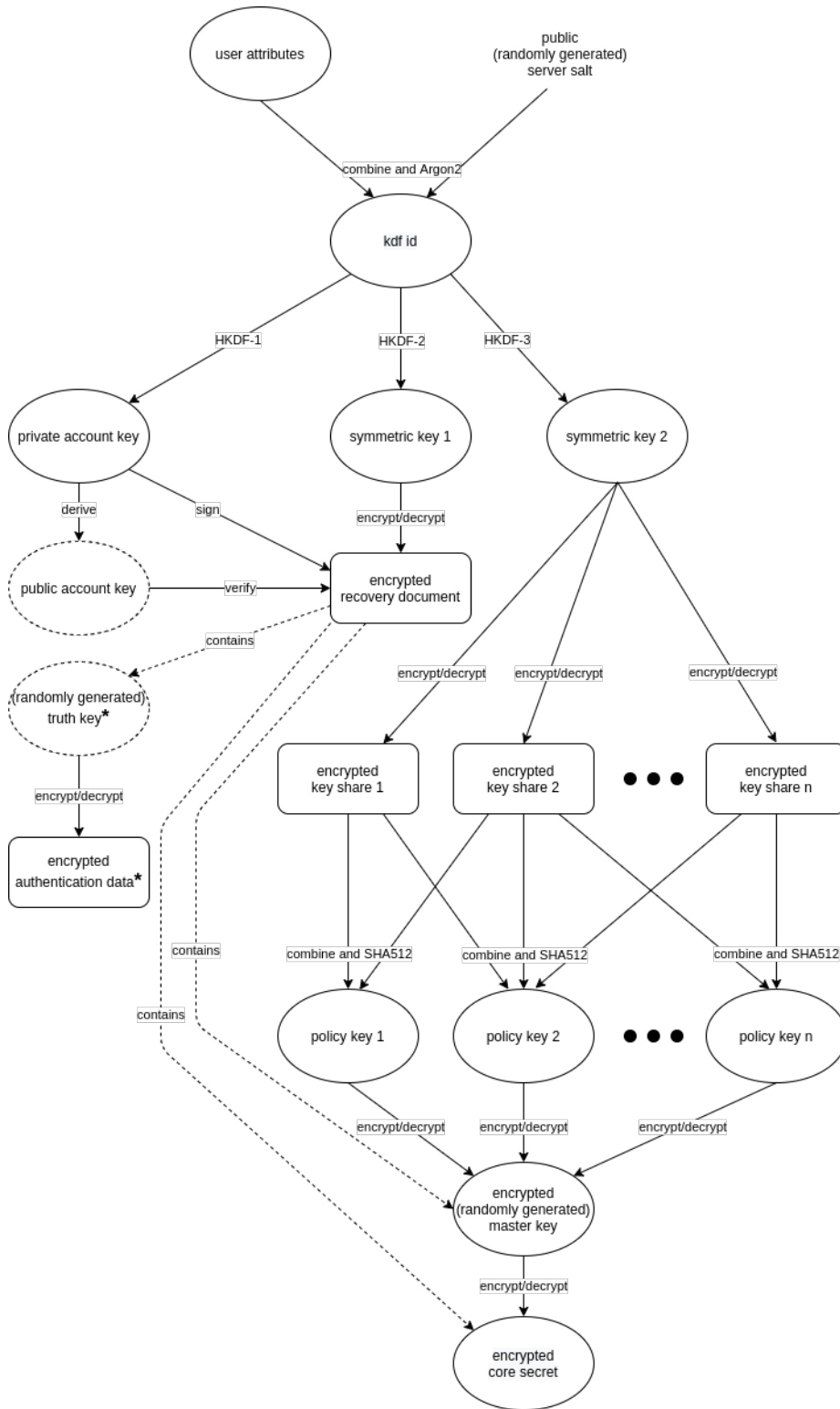


Figure 6: Secrets used in Anastasis

In the following the keys shown in the Figure 6 on page 17 are explained:

**kdf id** The *kdf id* is derived from the user attributes and a randomly generated public and constant salt value provided by the escrow provider using Argon2. It is used to derive the *private account key*, the *symmetric key 1* and the *symmetric key 2*.

**private account key** The *private account key* is used to sign the *encrypted recovery document*. It is derived from the *identity key* using *HKDF-1*.

**public account key** The *public account key* is derived from its corresponding *private account key*. It used to verify the signature of the *encrypted recovery document* and also is the identifier of the user which is needed by the provider.

**symmetric key 1** The *symmetric key 1* is derived from the *identity key* using *HKDF-2*. It is used to encrypt and decrypt the *encrypted recovery document* which is stored by the provider.

**symmetric key 2** The *symmetric key 2* is derived from the *identity key* using *HKDF-3*. It is used to encrypt and decrypt the different *encrypted key shares* which are stored by the escrow providers.

**truth key** The *truth key* is randomly generated for each *encrypted authentication data* and is stored within the *encrypted recovery document*. It may later be disclosed by the user to the escrow provider to let it decrypt the *encrypted authentication data* which allows the provider to then run the recovery authorization process.

**master key** The *master key* is randomly generated and is used to encrypt and decrypt the *encrypted core secret* which is stored within an *encrypted recovery document*. The *encrypted master key* also is stored within the *encrypted recovery document*.

**policy key** The *policy keys* are used for encryption and decryption of the *encrypted master key*. A *policy key* is constructed by hashing a specific combination of *key shares* specified by the user. For hashing SHA512 is used here.

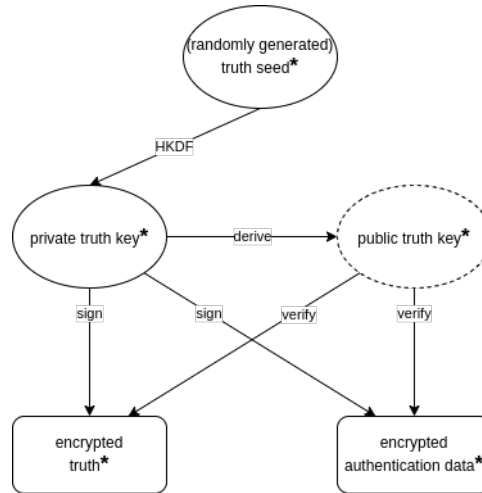


Figure 7: Key generation for signing of encrypted “Truth” data in Anastasis

In the following the keys shown in the Figure 7 on page 19 are explained:

**truth seed** Clients generate a random *truth seed* for each truth which is stored in the encrypted recovery document.

**private truth key** *Private keys* are derived per truth upload. They are used to sign the uploaded data. This way, the escrow provider can later prove that they preserved the data correctly. We use EdDSA [38] for the signatures.

**public truth key** *Public keys* are used to identify the truth in the provider’s database. Providers only store the first truth upload with a valid signature. Changes to truth are thus not possible, clients must create a fresh seed for every upload.

## 4.2. Adversary model

The adversary model of Anastasis has two types of adversaries: *weak adversaries* which do not know the user’s identifier (the *kdf id*), and *strong adversaries* which somehow do know a user’s identifier. Against weak adversaries, the system guarantees full confidentiality, except for a provider-specific public account key which links certain requests from the same user, and the data necessary for authentication. The latter is only disclosed to the providers when the user requests key recovery. Weak adversaries cannot break confidentiality even if all escrow providers are part of a conspiracy of weak adversaries. For strong adversaries, breaking confidentiality of the core secret still requires that a sufficient subset of the Anastasis escrow providers must have colluded with the strong adversary. The user can specify a set of policies which determine which Anastasis escrow providers would need to collude to break confidentiality. These policies also set the bar for the user to recover their core secret.

Anastasis providers are also not individually trusted to provide availability or authenticity. Users can specify multiple policies, and satisfying any one of the policies would



allow them to recover their core secret assuming the subset of providers specified in the policy is available (and preserved the authenticity of the data). As clients sign their uploads, they can verify the authenticity of the data returned by checking the signatures. Only strong adversaries are able to forge signatures, so they could create fraudulent recovery documents and/or key shares resulting in invalid restored core secrets. However, because uploads are never destructive, strong adversaries can only succeed in breaking availability if they collude with a subset of escrow providers that are present in all policies selected by the user.

Thus, users can improve confidentiality by having many different escrow providers in their policies, and improve availability by having many policies with few escrow providers. Anastasis does not resolve this trade-off, but allows users to make individual choices and gives them agility with respect to the parties whom they offer their trust, resulting in trust agility [37].

### 4.3. Encryption of the core secret

The *core secret* of the user is (AES) [39] encrypted using a symmetric *master key*. Recovering the master key requires the user to satisfy a *policy*. Policies specify a set of escrow methods, each of which leads the user to a *key share*. Combining those key shares (by hashing) allows the user to obtain a policy key, which can be used to decrypt the master key. There can be many policies, satisfying any of these will allow the user to recover the master key.

Which escrow methods are combined into which policies and which providers are involved can be different for each user. As users are unlikely to remember all the details, Anastasis needs a way to remember the specific configuration a user made.

This process description is provided in a *recovery document*.

### 4.4. The recovery document

A *recovery document* includes all the information a user needs to recover access to their core secret. It primarily identifies a set of *encrypted key shares* which have been entrusted to different Anastasis providers. For each key share, the recovery document specifies the respective Anastasis provider and also prescribes the *authentication method*, which specifies how the user should convince the Anastasis server that they are authorized to retrieve the encrypted key share. Authentication methods can for example include SMS-based verification, video-identification or a security question.

For each authentication method, specific Anastasis providers are separately provided (see Section 4.8) with the associated *encrypted key share* and (separately encrypted) *authentication data*. Anastasis operators may learn the authentication data during the recovery process to authenticate the user. Examples for authentication data would be a phone number (for SMS), a picture of the user (for video identification), or the (hash of) a security answer. A strong adversary is assumed to be able to learn the authentication data, while weak adversaries must not (except if they are the provider and then they may learn it only during key recovery).

The recovery document also specifies *policies*, which describe the combination(s) of the key shares (and thus authentication processes) that would suffice to obtain access to the core secret. For example, a policy could say that the authentication methods “A and B” suffice, and a second policy may permit “A and C”. A different user may choose to use the policy that “A and B and C” are all required. Anastasis imposes no limit on the number of policies in a recovery document, or the set of providers or authentication methods involved in guarding a user’s secret.

Weak adversaries must not be able to deduce information about a user’s recovery document (except for meta data such as its length or approximate creation time, which may be exposed to an adversary which monitors the user’s network traffic or operates an escrow provider).

#### 4.5. Identity-derived encryption

To start, a user provides their private (alas not really secret), unique and unforgettable user attributes as a seed to identify their account. For example, this could be a social security number together with their full name. Specifics may depend on the cultural context, in this document we will simply refer to this information as the *user attributes*.

For each Anastasis provider, a *kdf id* key is derived from the user’s attributes and a provider salt using Argon2 [20], a computationally expensive cryptographic hash function. Using an expensive hash algorithm is assumed to make it harder for a weak adversary to determine user attributes by brute force guessing. The salt ensures that the keys for the same user cannot be easily correlated across the various Anastasis servers. However, it is assumed that a strong adversary performing a targeted attack can compute the *kdf ids*.

The listing in Figure 8 provides pseudo-code for the computation of the *kdf id*. The inputs are:

**attributes** The personal attributes provided by the user.

**server\_salt** The salt from the Anastasis provider.

**keysize** The desired output size of the KDF, here 32 bytes.

```

user_identifier_derive(attributes, server_salt, keysize)
{
    kdf_id = Argon2(attributes, server_salt, keysize)
    return kdf_id
}

```

Figure 8: The user’s attributes are hashed with Argon2, to provide a `kdf_id` which will be used to derive other keys later. The hash must also be made over the respective provider’s `server_salt`. This ensures that the `kdf_id` is different on each server. The use of Argon2 and the respective `server_salt` are intended to make it difficult to brute-force `kdf_id` values and help protect user’s privacy. Also this ensures that the `kdf_ids` on every server differs. However, we do not assume that the identifier or the `kdf_id` cannot be determined by an adversary performing a targeted attack, as a user’s identifier is likely to always be known to state actors and may likely also be available to other actors.

Anastasis derives symmetric key material — but not the master secret — from the *kdf id* using different HKDFs [17].

When confidential data — such as the recovery document or the truth — is uploaded to an Anastasis server, the respective payload is encrypted using AES-GCM with the respective symmetric key and initialization vector derived key material as shown in Figure 6 and a high-entropy nonce. The nonce and the GCM tag are prepended to the ciphertext before being uploaded to the Anastasis server. This is done whenever confidential data is stored with the server, so both for encrypted authentication data (`/truth` uploads) and encrypted recovery documents (`/policy` uploads).

To ensure that the key derivation for the encryption of the recovery document differs fundamentally from that of an individual key share, we use different salts for different types of operations (“erd” and “eks” respectively):

```

encryption_key_create(kdf_id, salt, nonce)
{
    iv, key = HKDF (kdf_id, nonce, salt, keysize + ivsize)
    return iv, key
}

```

**HKDF()** The HKDF-function uses two phases: First we use HMAC-SHA512 for the extraction phase, then HMAC-SHA256 is used for expansion phase.

**kdf\_id** Hashed identifier.

**keysize** Size of the AES symmetric key, here 32 bytes.

**ivsize** Size of the AES GCM IV, here 12 bytes.

**nonce** 32-byte nonce, must never match “ver” (which it cannot as the length is different).  
Of course, we must avoid key reuse. So, we must use different nonces to get different keys and ivs (see below).

**key** Symmetric key which is later used to encrypt the documents with AES256-GCM.

**iv** IV which will be used for AES-GCM.

```
encrypt(kdf_id, data, salt)
{
nonce = generate_random_bytes(32)
iv, key = encryption_key_create(kdf_id, salt, nonce)
encrypted_data, aes_gcm_tag = AES256_GCM(data, iv, key)
encrypted_data = nonce + aes_gcm_tag + encrypted_data
return encrypted_data
}
```

```
key_share_encrypt(kdf_id, key_share)
{
encrypted_key_share = encrypt(kdf_id, key_share, "eks")
return encrypted_key_share
}
```

```
recovery_document_encrypt(kdf_id, recovery_document)
{
encrypted_recovery_document =
encrypt(kdf_id, recovery_document, "erd")
return encrypted_recovery_document
}
```

**encrypted\_recovery\_document** The encrypted recovery document which contains the authentication methods, policies and the encrypted core secret.

**encrypted\_key\_share** The encrypted key\_share which the escrow provider must release upon successful authentication.

**nonce** Nonce which is used to generate keys and ivs which are used for the encryption. The nonce must contain either eks or erd.

**encrypted\_data** The encrypted data contains the either a recovery document or a key share which was encrypted and the nonce and the aes\_gcm\_tag. To be able to decrypt it the first 32 Bytes are the nonce and the next 12 Bytes are the aes\_gcm\_tag.

## 4.6. Authenticity of recovery documents

`/policy/` requests are used to upload new encrypted recovery documents. For users to authorize `/policy` operations, we need an account key pair. Thus, in addition to the symmetric keys, an EdDSA-based *account key* is derived from the *kdf id* (see Figure 6) and used to identify the “account” of the user at each Anastasis server. EdDSA public keys are always points on Curve25519 and represented using the standard 256-bit Ed25519 compact format. The binary representation is converted to Crockford Base32 when transmitted inside JSON or as part of URLs in the RESTful API of Anastasis (see Section 5.2). EdDSA signatures are also provided in Crockford Base32-encoding and transmitted using the HTTP header `Anastasis-Account-Signature`. Encrypted recovery documents are stored using the public account key as the identifier.

As the account keys are derived from the *kdf id* — which strong adversaries are assumed to know —, we cannot assure that the corresponding private account key is truly secret. Thus, policy operations must never be destructive: A strong adversary can derive the private key and access (and with the *kdf id* also decrypt) the user’s recovery document (but not the core secret!), and also upload a new version of the encrypted recovery document. However, because uploads are not destructive, even a strong adversary cannot delete an existing version and thus cannot break availability.

For the generation of the private key we use the *kdf id* as the entropy source, hash it to derive a base secret which will then be processed to fit the requirements for EdDSA private keys. From the private key we can then generate the corresponding public key. Here, the string “ver” is used for the salt value for the HKDF to ensure that the result differs from other cases where we hash *kdf id*:

```
eddsa_keys_create (kdf_id, salt, keysize)
{
    ver_secret = HKDF(kdf_id, salt, keysize)
    eddsa_priv = eddsa_d_to_a(ver_secret)
    eddsa_pub = get_eddsa_pub(eddsa_priv)
    return eddsa_priv, eddsa_pub
}
```

**HKDF()** The HKDF-function uses two phases: First we use HMAC-SHA512 for the extraction phase, then HMAC-SHA256 is used for expansion phase.

**kdf\_id** Hashed identifier.

**salt** Is used that different keys are generated, the salt here is “ver”.

**key\_size** Size of the output, here 32 bytes.

**ver\_secret** Derived key from the *kdf\_id*, serves as intermediate step for the generation of the private key.

**eddsa\_d\_to\_a()** Function which converts the `ver_key` to a valid EdDSA private key. Specifically, assuming the value `eddsa_priv` is in a 32-byte array “digest”, the function clears and sets certain bits as follows:

```
digest[0] = (digest[0] & 0x7f) | 0x40;
digest[31] &= 0xf8;
```

**eddsa\_priv** The generated EdDSA private key.

**eddsa\_pub** The generated EdDSA public key.

#### 4.7. Account signatures

The EdDSA account keys are used to sign the encrypted recovery document sent from the client to the server.

```
(anastasis-account-signature) = eddsa_sign(h_body, eddsa_priv)
ver_res =
    eddsa_verify(h_body, anastasis-account-signature, eddsa_pub)
```

**anastasis-account-signature** Signature over the SHA-512 hash of the body using the purpose code `TALER_SIGNATURE_ANASTASIS_POLICY_UPLOAD` (1400) (see GNUnet EdDSA signature API for the use of purpose).

**h\_body** The hashed body.

**ver\_res** A Boolean value. True: Signature verification passed, False: Signature verification failed.

When requesting `/policy` downloads, the client must also provide a signature:

```
(anastasis-account-signature) = eddsa_sign(version, eddsa_priv)
ver_res =
    eddsa_verify(version, anastasis-account-signature, eddsa_pub)
```

**anastasis-account-signature** Signature over the SHA-512 hash of the body using the purpose code `TALER_SIGNATURE_ANASTASIS_POLICY_DOWNLOAD` (1401) (see GNUnet EdDSA signature API for the use of purpose).

**version** The version requested as a 64-bit integer, for the “latest version”.

**ver\_res** A Boolean value. True: Signature verification passed, False: Signature verification failed.

## 4.8. Authenticity of truth

`/truth/` requests are used to upload encrypted authentication data and encrypted key shares to an Anastasis escrow service. As an additional layer of protection, an Anastasis escrow service cannot link truth data to policy data, except maybe by observing the timing of the requests.

Anastasis uses EdDSA-based *truth keys* to identify truth objects. For those, the truth keys are derived from a *truth seed*, as show in Figure 7. The private truth key is used to authorize the truth upload. The signatures also authenticate the encrypted key shares returned from the Anastasis provider during recovery. The signature process for truth is analogous to that for accounts.

## 4.9. Availability considerations

Anastasis considers two main threats against availability. First, the Anastasis server operators must be protected against denial-of-service attacks where an adversary attempts to exhaust operator’s resources. The API protects against these attacks by allowing operators to set fees for expensive operations. Furthermore, all data stored comes with an expiration logic, so an attacker cannot force servers to store data indefinitely.

A second availability issue arises from strong adversaries that may be able to compute the account keys of some user. While we assume that such an adversary cannot successfully authenticate against the truth, the account key does inherently enable these adversaries to upload a new policy for the account. This cannot be prevented, as the legitimate user must be able to set or change a policy using only the account key. To ensure that an adversary cannot exploit this, policy uploads first of all never delete existing policies, but merely create another version. This way, even if an adversary uploads a malicious policy, a user can still retrieve an older version of the policy to recover access to their data. This append-only storage for policies still leaves a strong adversary with the option of uploading many policies to exhaust the Anastasis server’s capacity. We limit this attack by requiring a policy upload to include a reference to a payment identifier from a payment made by the user. Thus, a policy upload requires both knowledge of the identity and making a payment. This effectively prevents an adversary from using the append-only policy storage from exhausting Anastasis server capacity.

## 5. Implementation

The Anastasis is written in C. We decided to use C because of the various dependencies, including cryptographic libraries. Especially, GNU Taler and Sync, which are working in concert with Anastasis, are also written in C. Using the same language makes integration and testing of Anastasis much easier.

The whole Anastasis application consists of multiple components. Figure 9 gives an overview over all the components.

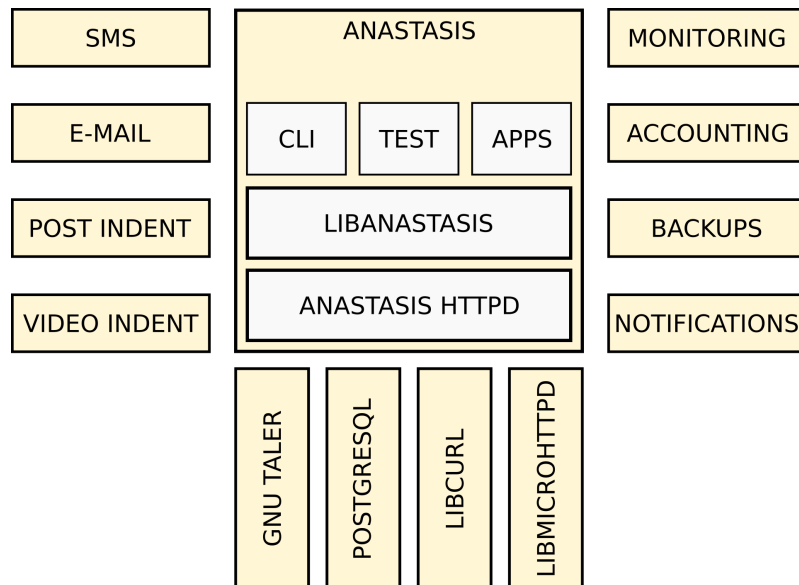


Figure 9: Secret split process

In the center is the core implementation of Anastasis. On the left are some of the planned authentication methods from the application. On the right side of the box are the core parts which are necessary to operate Anastasis commercially. These parts are anticipated for a production deployment, but not part of the implementation for this thesis.

At the bottom section are the external libraries used for the project. These libraries are presented in Section 5.6.



## 5.1. System architecture

This graphic shows the basic architecture of the Anastasis application. It shows a simplified flow of the application. The details of each component are explained later.

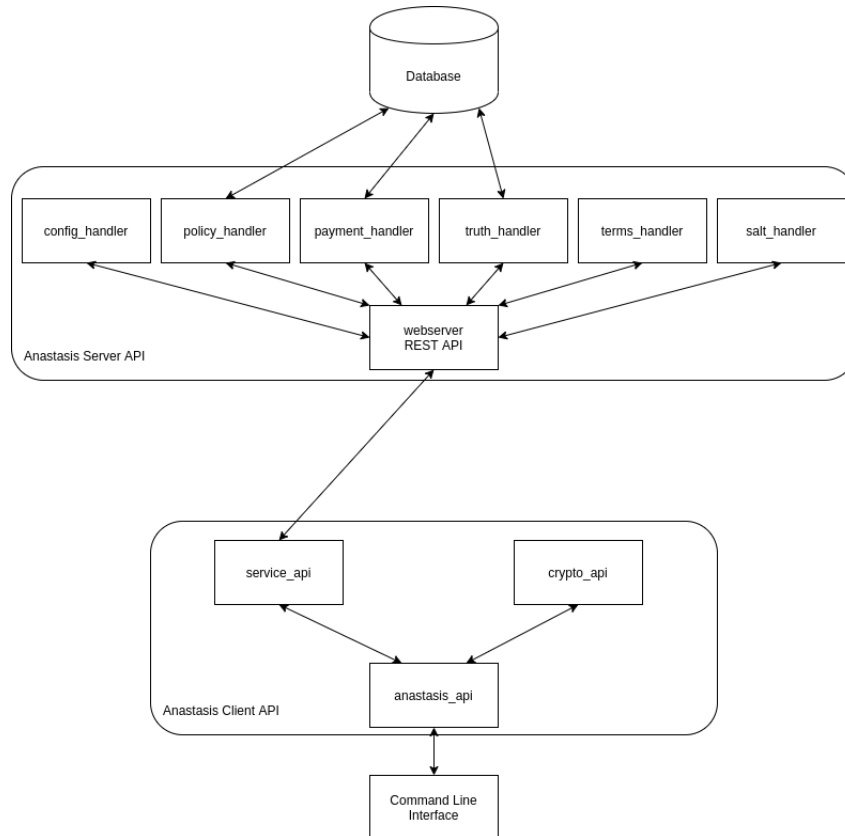


Figure 10: System design overview

1. The Anastasis CLI interacts with the Anastasis API. The Anastasis API is responsible for triggering interactions with the user, and also manages the interactions between the various client-side components.
2. After the user provided their unforgettable secret, the Crypto API derives the needed key material for the further communication. This is simplified, in reality the client would first need to download the server salt to generate the user keys. The crypto API is later also responsible for the decryption and encryption of the data, sent or received from the server.
3. The Service API is responsible for the communication with the Anastasis server. The Anastasis API sends the previously generated data and the user selected request to the service. The Service API is also responsible to handle the server's response to the request.

4. The central webservice logic handles HTTP requests sent to it by the clients. It will dispatch requests to the corresponding handler. The webservice's core logic also returns the response and the status code of the operation to the client application.
5. Each REST endpoint of the Anastasis server is implemented by a specific handler. The handler processes the requests, typically by storing or looking up the requested data with the database. When the request is finished, the handler will send back the data or the status code to the webservice's core logic.

## 5.2. Server architecture

The Anastasis server architecture consists of two components. A web server with a REST API and a PostgreSQL database. The structure of these two components is shown in Figure 11.

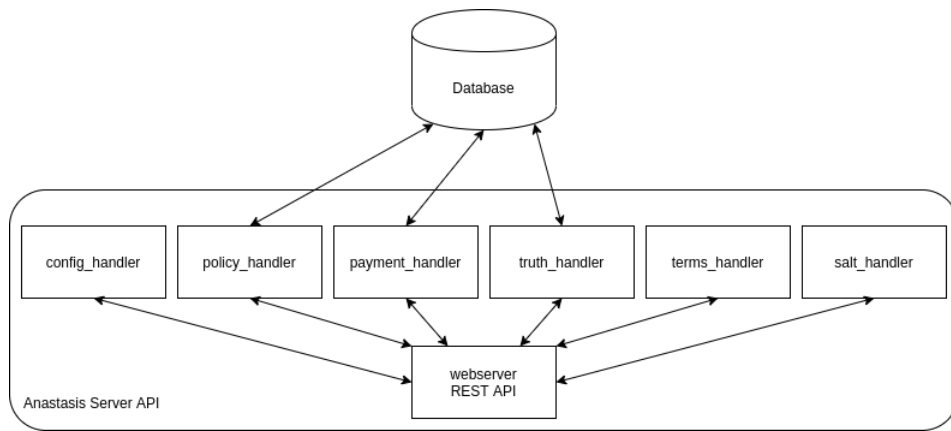


Figure 11: Anastasis server architecture

The webservice of Anastasis provides a RESTful API. For a detailed documentation of the REST API, see appendix A.

### 5.2.1. Database

The database schema of Anastasis is shown in Figure 12.

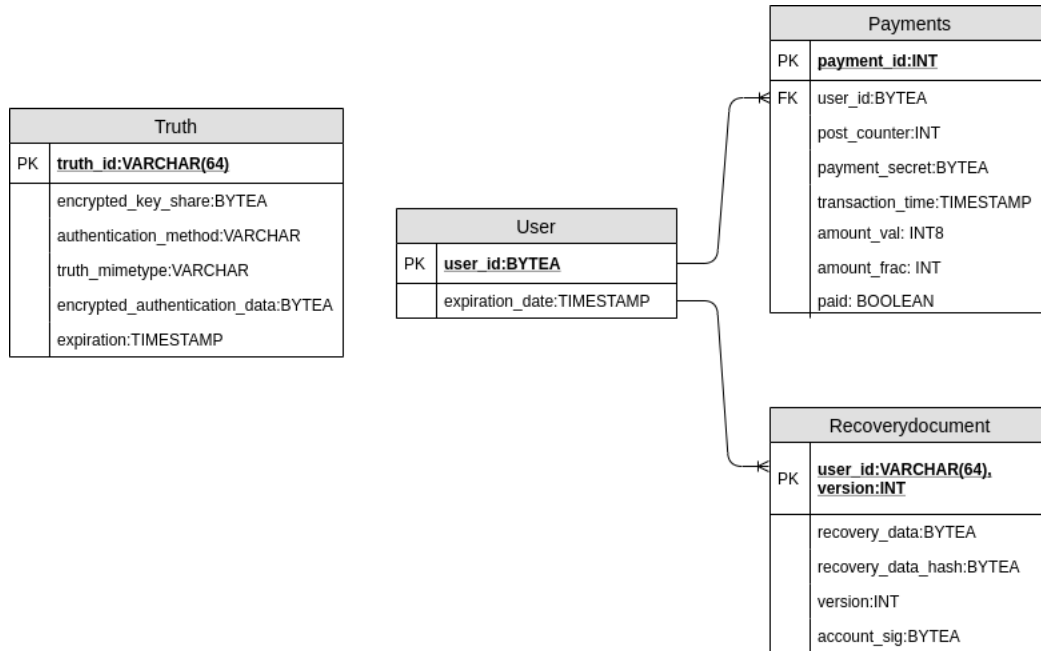


Figure 12: Anastasis database schema

The database schema consists of four main tables:

- The *Truth* table is responsible for storing the key shares and its authentication method. The key share and the authentication data are stored encrypted in the database. The authentication data is only decrypted during authentication. The key share is never decrypted for the server. This protects the privacy of the customer. Likewise, the user data is protected after a possible theft.
- The *User* table contains the identification of the user and an expiration timestamp. This timestamp is a subscription period. This timestamp is updated after each payment the user makes. Users for whom the subscription has expired are periodically deleted.
- The *Payments* table contains the details of a payment from a user. The payment is used either for the post-counter or the subscription. The post-counter is decremented after each upload of a recovery document. The user can only upload the recovery document if the provided payment contains a post-counter which is at least 1. Through this measure we can prevent people from maliciously filling our database.

- The *Recoverydocument* table contains the recovery information. The recovery document is stored encrypted in the database. This offers better protection, as explained earlier for the Truth table. Each recovery document record also contains a version, a hash of the recovery document and a signature. The version attribute allows the user to lookup a specific version of the document. The hash is used to check if the user uploads a duplicate of the document. The signature attests the integrity of the recovery data.

### 5.2.2. Authentication methods

This section describes an overview over the different possible authentication methods for Anastasis. In our implementation only the secure question is implemented. The other methods are just explained how they would be implemented.

In all cases, the authentication process begins by the user decrypting their (encrypted) recovery document, which contains a list of Anastasis providers, associated authentication methods, `truth_seeds` and associated truth encryption keys. The recovery process then varies slightly depending on the authentication method.

**SMS (sms)** The user tells the server with a request that they wants to authorize key recovery (via `GET /truth/$TRUTH_PUB`), providing a way to decrypt the truth with the phone number. The server will then generate a `$PIN` and send it via an SMS provider to the stored number in the truth object. The client then must send another request with the sent `$PIN` (via `GET /truth/$TRUTH_PUB?response=$PIN`). The server can now check if the two PINs match. Upon success, the server returns the encrypted key share.

**Video identification (vid)** This method allows the user to identify via video-call. Since the respective images must be passed on to the video identification service in the event of password recovery, it must be ensured that no further information about the user can be derived from them. Hence, the user's client software must try to delete metadata that could result in accidental information leakage about the user from the image before encrypting and uploading it to the Anastasis provider.

For recovery, the user must first send a request to server that they wants to authorize recovery (`GET /truth/$TRUTH_PUB`). The Anastasis provider will then decrypt the user's image and send a request with a `$TOKEN` to a video authentication provider that a user wants to authenticate, and respond to the user with a link to a video conference. The video authentication provider then checks via video conference that the user in the image is the same that they have on the video link. Upon success, the video provider releases the `$TOKEN` to the user. The client then must send another request with the `$TOKEN` (via `GET /truth/$TRUTH_PUB?response=$TOKEN`). The Anastasis provider checks that the tokens match, and upon success returns the encrypted key share.

**Post identification (post)** The user tells the Anastasis provider with a request that they want to authenticate using Post identification (GET /truth/\$TRUTH\_PUB). The Anastasis provider uses the request to decrypt the user's truth to determine the user's postal address, and sends them letter containing a \$PIN. Upon receiving the letter, the client then has to send another request with the \$PIN (GET /truth/\$TRUTH\_PUB?response=\$PIN). The server can now check if the two PINs match. Upon success the server will release the encrypted key share.

**Security question (qa)** The user provided Anastasis with a secure question and a (normalized) answer. The secure question becomes part of the encrypted recovery document, and is never disclosed to weak adversaries, even during recovery. The encrypted truth on the server only contains a (salted) hash of the answer. The Anastasis provider cannot learn the plaintext answer. Because of the salt, and it cannot mount a confirmation attack either.

If the user wants to recover the key share from the server, they must provide the (salted) hash of the answer to the security question (via GET /truth/\$TRUTH\_PUB?response=\$HASH). The server then checks if the stored and the provided hash match. Upon success the server responds with the encrypted key share.

### 5.3. Client architecture

The Anastasis client architecture consists of two main components. A client API which communicates with the server and a command line application which interacts with the user. The structure of these two components is shown in Figure 13.

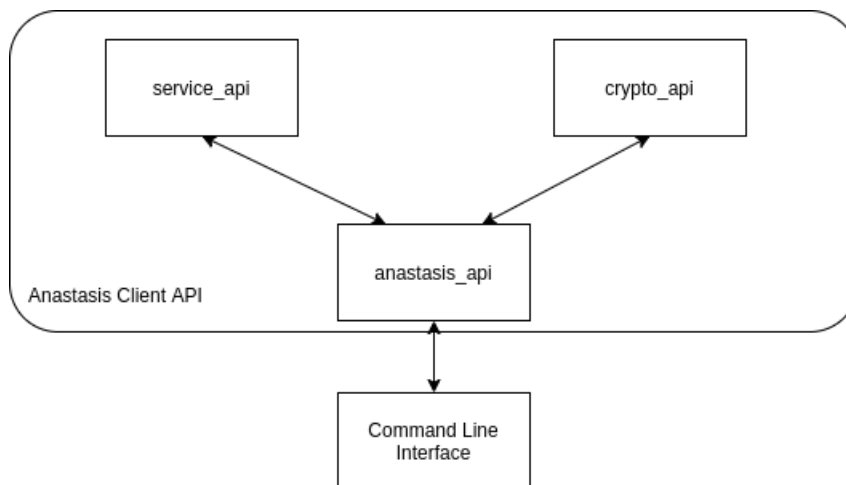


Figure 13: Anastasis client architecture

The Anastasis client implementation includes three distinctive APIs: a *Crypto API* which provides the different cryptographic functions, a *Service API* which sends the

request to the server and the *Client API* which manages the main data structures and provides an abstraction for the application.

### 5.3.1. Crypto API

The most important data structures in the crypto API are the following:

- The `kdf_id` is a hash code which was generated with Argon2. The entropy source is the user's unforgettable secret. The `kdf_id` is used to create various key's, for more details see Chapter 4.

```
struct kdf_id
{
    Hashcode; //512-bit
}
```

- The `account_private_key` is used to sign the data and check the signature later. It is a 256-bit EdDSA private key. It is generated with the `kdf_id` as entropy source.

```
struct account_private_key
{
    eddsa_private_key;
}
```

- The `account_public_key` is used as the user identification on the different providers. It is generated from the `private_key`.

```
struct account_public_key
{
    eddsa_public_key;
}
```

- The `truth_key` is a randomly generated AES-256 GCM key. It is used to encrypt the user specify data in the truth object.

```
struct truth_key
{
    key; //256-bit
}
```

- The `truth_seed` is a randomly generated nonce with a size of 32 Bytes. It is used to derive a `truth_private_key` and is stored within an encrypted recovery document.

```
struct truth_seed
{
    nonce; //256-bit
}
```

- The `truth_private_key` is used to sign the encrypted key share and the encrypted authentication data. It is a 256-bit EdDSA private key. It is generated with the truth seed as entropy source.

```
struct truth_private_key
{
    eddsa_private_key;
}
```

The `truth_public_key` is used as the user identification on the different providers in case of uploaded truths. It is generated from the truth private key.

```
struct truth_public_key
{
    eddsa_public_key;
}
```

- Anastasis needs different symmetric keys to encrypt data for example, the recovery document. These symmetric keys are all 256-bit large hashcodes. These symmetric keys are generated through the key routine defined in Implementation Key usage.

```
struct symmetric_key
{
    hashcode; //256-bit
}
```

- Each policy has a separate `policy_key`. The key is used to encrypt the `master_key`. The `policy_key` is also a AES-256 GCM key. It is generated through the combination of a set of `key_shares`.

```
struct policy_key
{
    hashcode; //256-bit
}
```

- Every truth object contains a `key_share`. A `key_share` is a 256-bit random generated bit sequence.

```
struct key_share
{
    hashcode; //256-bit
}
```

- Before every encryption a random 256-bit large nonce is generated. This gives the encryption algorithm a random factor.

```

struct nonce
{
    hashcode; //256-bit
}

```

- To use AES-256 GCM an IV must be generated. It is generated with an HKDF over a salt the kdf\_id and a symmetric key.

```

struct iv
{
    hashcode; //128-bit
}

```

- The aes\_tag is generated after each encryption, it is later used to check the integrity of the data.

```

struct aes_tag
{
    hashcode; //128-bit
}

```

The functions of the crypto API basically provide the canonical set of cryptographic operations (hash, encrypt, decrypt, etc.) over these basic data structures.

### 5.3.2. Client API

The most important data structures in the client API are the following:

- The secret share data structure is used to upload a new recovery document.

```

struct secret_share
{
    kdf_id;
    last_etag;
    policies;
    core_secret;
}

```

- kdf\_id: is used to compute the account public and private key. The hash is 512bit large.
- last\_etag: this hash is sent with the recovery document. The server will check the hash if the document on the server is the same. This prevents unnecessary uploads. The hash is 512-bit large.
- policies: is a list of all generated policies the user wants to combine into a recovery document.



- `core_secret`: is the user provided core secret. This is just a binary blob so Anastasis does not have a restriction for the user secret. This could be a for example a private key or a password the user wants to backup.
- The recovery information data structure holds a recovery document. It is downloaded within the recovery process and stored inside a recovery data structure.

```

struct recovery_information
{
    struct decrypttion_policies;
    struct challenges;
    version;
    salt;
}

```

- `decrypttion_policies`: holds all available policies within the downloaded recovery document.
- `challenges`: holds all available authentication methods within the recovery document.
- `version`: the version of the downloaded recovery document is stored here.
- `salt`: this is the salt used for the generation of the policy keys. The salt is a 512-bit value.
- The recovery data structure is generated at the start of a secret recovery. It contains all available policies and lists which challenges are solved. Through this struct the client can check if a policy was solved completely.

```

struct recovery
{
    kdf_id;
    version;
    provider_url;
    salt;
    solved_challenges;
    struct recovery_information;
}

```

- `kdf_id`: is used to compute the account public and private key. The hash is 512bit large.
- `version`: hold the user desired version he wishes to download. This can be null then the client downloads the latest version.
- `provider_url`: the client will download the recovery document from this provider url.
- `salt`: this is the salt of the provider specified in `provider_url`.

- `solved_challenges`: this is a list of all solved challenges. This list is updated after each successful authentication. This allows the client to check if a policy is solved.
- `recovery_information`: as previously mentioned this data structure holds the downloaded recover document to process within the recovery
- A truth data structure is used to upload a new authentication method to a provider. It is identified by the `TRUTH_PUB` which the user creates through a HKDF over the `truth_seed`. The truth data structure is only used for the secret share process and not for the recovery.

```

struct truth
{
    truth_seed;
    method;
    mime_type;
    encrypted_truth;
    encrypted_key_share;
}

```

- `truth_seed`: the `truth_seed` is the identification of the truth object. It is used as entropy source to generate the `TRUTH_PUB`, which later identifies the truth object. The truth objects are not linked to the user. A list of these `truth_seeds` are stored inside the recovery document, with this the user data is more anonymous.
- `method`: this defines which method the user chose to configure, for example SMS, email, secure question.
- `mime_type`: this defines in which format the truth was saved, for example jpeg, png, txt, json.
- `encrypted_truth`: the encrypted truth holds the authentication specific data. It holds for example the hashed answer and the question. It is encrypted with the specific `truth_key` which is stored inside the `recovery_document`.
- `encrypted_key_share`: this is the `key_share` protected by this truth. It is encrypted with a key which was derived with the `kdf_id` of the user. The server will later send this `key_share` to the user upon successful authentication.

- The policy data structure is used to create new policies to combine them into the recovery document. The policy data structure is only used for the secret share process.

```

struct policy
{
    truths;
    policy_key;
    salt;
}

```

- truths: every policy has a set of truths which need to be solved to recover the policy\_key
  - policy\_key: the policy\_key is created through the combination of the different key\_shares within each of the truth objects. It is later used to encrypt the master\_key.
  - salt: defines the salt used to create the policy\_key.
- The decryption\_policy data structure is used in the recovery process. It has slightly different values as the policy structure.

```

struct decryption_policy
{
    truth_seeds;
    encrypted_master_key;
    salt;
}

```

- truth\_seeds: is a list of truth\_seeds which need to be solved to recreate the policy key. Each truth\_seed has a corresponding challenge.
- encrypted\_master\_key: holds an encrypted version of the master\_key which was used to encrypt the core secret. In every policy lies the same master\_key which was encrypted by the specific policy\_key.
- salt: defines the salt which was used to create this policy\_key.

- The challenge data structure is used for the several `key_share` lookups. We named the process of authentication on the providers as challenges. It has slightly different variables as the truth data structure.

```

struct challenge
{
    truth_seed;
    url;
    truth_key;
    method;
    key_share;
    instructions;
}

```

- `truth_seed`: Entropy source to generate the `TRUTH_PUB`, which identifies the challenge on the server.
- `url`: defines the provider URL on which the truth was stored.
- `truth_key`: this key is sent to the server within the authentication procedure. The server can decrypt the truth with this key to start the authentication.
- `method`: defines the method of this challenge, for example email, SMS, secure question.
- `key_share`: After each successful authentication the `key_share` which was sent by the server will be saved within this variable. It is later used to recreate a `policy_key`.
- `instructions`: this contains a string with the instructions for the user. This could for example be:” What is your favourite colour?” or” An SMS was sent to the number +41..... please provide the pin”.

The functions of the client API basically provide a way to backup a core secret by providing user’s identity attributes, the secret and constructing the policies, as well as a way to recover a core secret by providing the user’s identity attributes and then satisfying the authentication challenges.

### 5.3.3. Service API

The service API is responsible for sending the requests to the REST API of the server. The client has implemented functions for every endpoint. For more details see REST API documentation in appendix A.

## 5.4. Application flow

This section describes a happy flow of the two protocols of Anastasis, secret splitting and secret recovery.

### 5.4.1. Secret splitting

Figure 14 illustrates the secret splitting process.

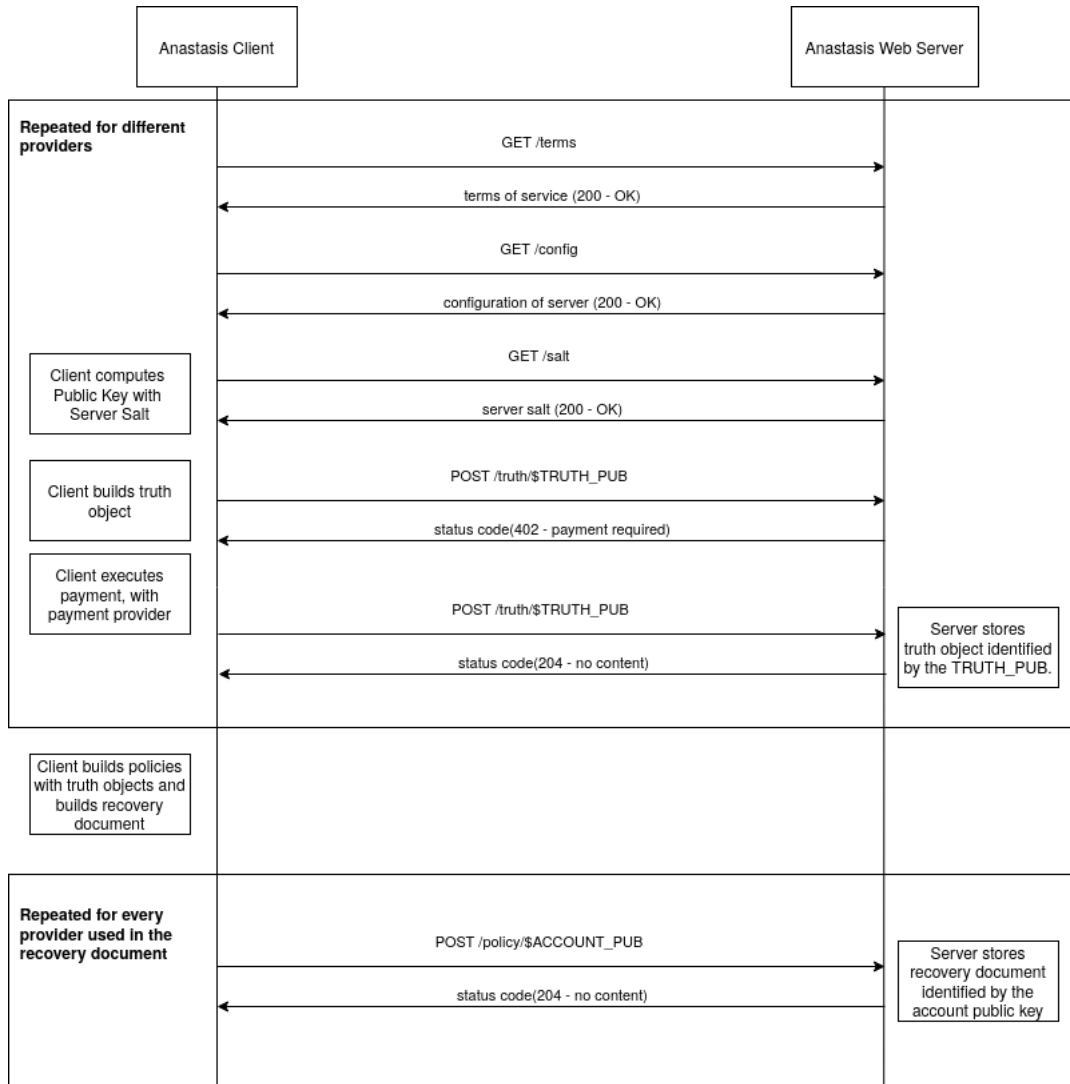


Figure 14: Secret split process

1. The user selects a new escrow provider on which per wants to store a truth object.
2. The client software downloads the terms of service for this provider (GET /terms). This is also a check if the server is available if this command doesn't respond the client will abort the process.
3. Next the client requests the server configuration (GET /configuration). The configuration lists the available authentication methods and the protocol version of the server.
4. The client downloads the server salt (GET /salt). The salt is used to generate the server specific account public key, which identifies the user.
5. After the user has generated the public key, per will create a truth object on the client. The truth object contains all the needed information for the recovery for this key share. This truth object is sent encrypted to the server and stored under the TRUTH\_PUB the client generated (POST /truth/\$TRUTH\_PUB).
6. In this scenario the client has not yet paid for the upload. This means the server will respond with the HTTP status code 402 **Payment required**. The client first must do a payment with our payment provider — GNU Taler. After the successful payment the client will receive a payment identifier. With this payment identifier he can resend the previously failed request.
7. The user will now repeat the steps 1-6 until per thinks that they have setup a sufficient amount of authentication methods. The user can now combine these providers to create policies. For example per may have stored three truth objects at three different providers. This means per can now define combinations with these providers, for example A+B, A+C and B+C. This means the user has three ways to recover their secret.
8. After the user has generated the policies the client will generate a recovery document. The recovery document contains a list of all truth\_seed's used, a list of the policies and the encrypted core secret of the user. The client will now send a encrypted recovery document to each provider used in the recovery document (POST /policy/\$ACCOUNT\_PUB). Through this, the recovery document is replicated and recovery can proceed without a single point of failure.

## 5.4.2. Secret recovery

Figure 15 illustrates the recovery process.

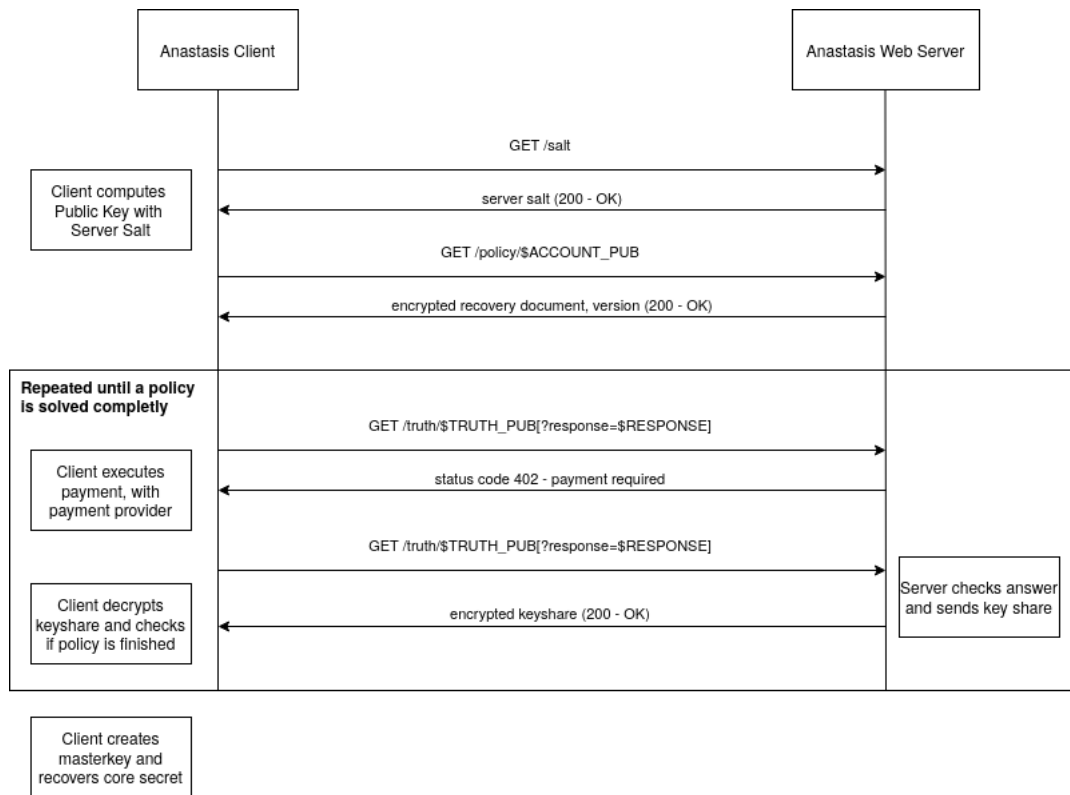


Figure 15: Secret recovery process

1. The user selects a server on which per previously stored a recovery document.
2. Next the client downloads the server salt to compute the server specific account public key (`GET /salt`).
3. After the user generated the public key, per will download the recovery document. At this point per can define a specific version or the latest version of the recovery document. In the illustration the client downloads the latest version (`GET /policy/$ACCOUNT_PUB`).
4. The client will now decrypt the recovery document and list all policies and authentication methods. The user now has to solve these challenges. In this example the user has to answer a secure question which was sent to them in the recovery document. (`GET /truth/$TRUTH_PUB?response=$RESPONSE`)

5. Note the server can define that a challenge has a certain cost, in this scenario the server rejects the first request because the user has not yet paid for recovery. After the payment the user can resend the request. After each successfully solved challenge the client will check if one of the policies is completely satisfied. If all shares needed for one of the policies have been recovered, the client will decrypt the core secret and provide it to the user.

Figure 15 shows the flow using a secure question for the authentication challenge. If the user would have chosen a complex authentication method like SMS or E-Mail, the client would first need to start the challenge with the request (GET /truth/\$TRUTH\_PUB). The server would then notify the user that per will receive some token out of bounds. After that, the user would have to provide for example the PIN sent to them via SMS with the same request as before (GET /truth/\$TRUTH\_PUB?response=\$RESPONSE).

## 5.5. Client Application Command Line Interface (CLI)

There are two client applications which interact with the user. First the Anastasis *splitter* and second the Anastasis *assembler*. The splitter application is responsible for the backup of the core secret. The assembler is then responsible for the recovery of the core secret.

Both commands are started with a configuration option “-me=FILE” that gives the name of a file with the user’s identity attributes.

### 5.5.1. Anastasis splitter

The user starts the assembler by passing a JSON document with their unforgettable identity attributes (name, social security number, ...).

The following commands are available:

- server add \$URL: this command lets the user add escrow providers. The command will check if a supported escrow service is available under the provided URL. Afterwards it will download its terms and salt. The server needs to be added before the user can do any uploads on it.
- truth add \$server \$method \$truth: with this command the user can upload a truth on a previously added server. The user needs to specify the authorization method used and the truth for the authorization process, for example the phone number for SMS authentication. The application will check if the server supports the provided method before uploading.
- policy add \$truth1 \$truth2...: after a user has added all the truths, per can start to create policies. Per can combine the truths in any way they wish. It is also possible to just store one truth in a policy, but this is not recommended since it defies the design of the application.
- policy: shows all created policies.



- truth: shows all created truths.
- server: shows all added servers.
- publish \$secret: if the user is finished per can publish the configuration. The application will then generate the recovery document with the provided information and secret. Afterwards, it will upload the recovery document on every server that was used. For recovery, the user only needs to remember any one of the servers.

Below is an example transcript of an interaction with the splitter:

```
$ anastasis-splitter --me=identity.json
anastasis-splitter> server add $URL1
version: 1.0
annual fee: 4.99 KUDOS,
available policy methods: sms
Server #1 available
anastasis-splitter> server add $URL2
version: 1.0
annual fee: 3.99 KUDOS,
available policy methods: sms, question
Server #2 available
anastasis-splitter> truth add server#1 sms +492452526
Truth #1 added for server #1
anastasis-splitter> truth add server#2 mail "hoehenweg 80, Biel"
Sorry, server #2 does not support 'mail'
anastasis-splitter> truth add question "favorite color" "red"
Truth #2 added
anastasis-splitter> policy add truth#1 truth#2
Policy #1 defined
anastasis-splitter> policy
Policy#1: #truth#1 #truth2
anastasis-splitter> truth
truth#1: server#1 sms +492452526
truth#2: server#2 question "favorite color" <OMITTED>
anastasis-splitter> truth --secrets
truth#1: sms +492452526
truth#2: question "favorite color" "red"
anastasis-splitter> server
server#1: http://anastasis.example.com/ methods: sms,
insured up to: 420 KUDOS, cost: 0.4 KUDOS
anastasis-splitter> publish
Server#1 failure: 402 payment required:
payto://pay/ABALSASDFA KUDOS:0.3
Server#2 failure: 402 payment required:
```

```

payto://pay/ABALSAADAS KUDOS:0.5
Total: 0.8 KUDOS
# Here: taler-wallet-cli payto://pay/ABALASDFA used to pay!
anastasis-splitter> publish
Server#2 failure: 402 payment required
# Here: taler-wallet-cli payto://pay/ABASDFASDF used to pay!
anastasis-splitter> publish "my super secret"
Thank you for using Anastasis.
$

```

### 5.5.2. Anastasis assembler

The user starts the assembler by passing a JSON document with their unforgettable identity attributes (name, social security number, ...). They also must pass the URL of an escrow provider which stores their recovery document, as well as the requested version of the recovery document. The assembler will then download and decrypt the recovery document and begin the recovery process.

The following commands are available:

- `truth`: shows all available authorization challenges from the recovery document and their status (“(-)” not solved, “(+)” solved)
- `policies`: shows all available policies in the recovery document and the respective status of the truths used in each policy.
- `try $truth`: this command starts an authorization process which needs interaction with external services like SMS or email. It shows the instructions to follow to authorize release of the share.
- `answer $truth $answer`: this command tries to answer the selected challenge with the provided answer. The application will check the answer and give a feedback to the user. Everytime a challenge is solved, the client API will check if as a result any of the policies is completely satisfied. If any policy was completely satisfied, the assembler will print out the recovered core secret and exit.

Below is an example transcript of an interaction with the assembler:

```

$ anastasis-assembler --import https://anastasis.example.com/
--policy-version=42 --me=identity.json
anastasis-assembler> truth
truth#1(-): KUDOS 0.0 question "favorite color"
truth#2(-): KUDOS 0.4 sms
truth#3(-): KUDOS 2.6 post
anastasis-assembler> policies
policy#1: KUDOS 0.4 truth#1 truth#2 missing
policy#2: KUDOS 3.0 truth#1 truth#2 truth#3 missing

```

```

anastasis-assembler> try truth#2
payto://pay/BASDFASD
# SMS arrives asynchronously
anastasis-assembler> answer truth#2 1234
Success truth#2
anastasis-assembler> answer truth#1 "blue"
Failed truth#1
anastasis-assembler> truth
truth#1(-): KUDOS 0.0 question "favorite color"
truth#2(+): KUDOS 0.4 sms
truth#3(-): KUDOS 2.6 post
anastasis-assembler> policies
policy#1: KUDOS 0.0 truth#1 missing
policy#2: KUDOS 2.6 truth#1 truth#3 missing
anastasis-assembler> answer truth#2 "red"
Success truth#2
//One of the policies was solved successfully and the secret is recovered.
Secret was: "my super secret"
$

```

## 5.6. Libraries

In this section the libraries used by Anastasis are presented.

### 5.6.1. GNU Taler

GNU Taler is one of the main reasons why we started to implement Anastasis, since the application needs a system to back up the private keys of their users. “GNU Taler is a privacy-preserving payment system. Customers can stay anonymous, but merchants can not hide their income through payments with GNU Taler. This helps to avoid tax evasion and money laundering.” [40]

To operate GNU Taler the user needs to install an electronic wallet. Backups of the wallet are secured with a secret key. Here comes Anastasis into play, Anastasis will secure this secret key for the user.

In our implementation GNU Taler is also our payment system. We decided to use GNU Taler because both Anastasis and GNU Taler are privacy preserving applications. If we for example used credit cards for payments the user would no longer be anonymous which is helpful for the security of Anastasis as it allows us to use the user’s name in the user’s identity attributes. GNU Taler is also a GNU package and Free Software. [40]

### 5.6.2. PostgreSQL

PostgreSQL is a Free/Libre Open Source object-relational database. PostgreSQL has over 30 years of active development which makes it a stable and reliable software.

We use PostgreSQL as our database on the Anastasis server. We decided to use PostgreSQL because it is an open source and lightweight software which has a big community. This means there are a lot of helpful documentations and forums. [41]

### 5.6.3. Libcurl

Libcurl is a libre URL transfer library. Libcurl supports a wide range of protocols and a C API. Libcurl is also ready for IPv6 and SSL certificates.

For Anastasis we use Libcurl to generate the client-side HTTP requests. We decided to use Libcurl because it is also written in C and free software. The software is also well supported and has a good documentation. This makes the integration in our application easy. [42]

### 5.6.4. GNU Libmicrohttpd

GNU libmicrohttpd is a small C library which provides an easy way to run a HTTP server. We use GNU Libmicrohttpd in Anastasis to provide a simple webserver. The main reason why we did not use apache or nginx is that we do not need a standalone webserver. The Anastasis webserver just must handle some API requests, a standalone webserver is not needed for that and would make the infrastructure more complex to maintain and develop. GNU Libmicrohttpd is also a GNU package and Free Software. [43]

## 5.7. Testing

To test our application, we used the GNU Taler testing library as our foundation for t of our testings. This library allows you to create testing instances of both the Anastasis application and the GNU Taler payment system. We implemented unit tests for the crypto functions and the database operations. The following four tests are independently performed.

- The first test is the database test. The Anastasis testing library first connects to a test database, this database is only used for the testing, we never test on the live database. The test first deletes and recreates the database. After that it will perform several unit tests to check if the database queries of the application are working as intended.
- Next we test the Anastasis crypto API, it tests all the cryptographic functions used in the API with unit tests. The most important part is that the recreation of the keys and decryption works as intended.
- After the basic parts of the application are tested the client will test every request in the Anastasis server API. For this we need the Taler Testing library. The

Taler testing library will start an instance of the Anastasis webserver and a GNU Taler merchant service. The merchant service is needed to process the payment operations. The testing library will now send a request to every end point of the Anastasis REST API. It will check if every response of the REST API is as intended.

- At the end the whole application flow is tested. For this we need to start a Anastasis server, Taler merchant and Taler exchange instance. The library will now perform a full secret split and secret recovery. This test is successful if the provided core secret at the begin, matches the recovered core secret.

## 6. Business model

We are currently in the process of building a start-up for the Anastasis application. This business model shows an overview how we want to build our start-up and how we want to continue our work on the project.

### 6.1. Executive summary

Users of cryptography are frequently facing the challenge to secure their core secrets (private keys), and the contemporary default of asking them to remember strong passphrases is inadequate for mass adoption. The loss of such a core secret can cause severe damage for a user. Our project was conceived as a solution to similar problems several privacy enhancing software projects are facing today. Specifically, the Swiss Pretty Easy Privacy project<sup>7</sup>, an E-Mail encryption solution which needs an easy way for users to recover their private keys to avoid the loss of encrypted E-Mails. The GNU Taler team is building an electronic payment system and is facing an equivalent challenge: the European Central Bank informed them about a requirement for electronic wallets denominated in Euros to support password-less data recovery. We designed Anastasis to address this common problem of cryptographic consumer products. Within our bachelor thesis we could build a working prototype of the application. But this application is not a finished product. Within the thesis we only could implement rudimentary authentication methods. To satisfy the requirements of our industry partners we need to have several different authentication methods implemented. Additionally, the Anastasis environment will need proper automatization. Specifically, monitoring of the integration with external authentication providers, the correct operation of the backup mechanism and the business logic. To make Anastasis ready for public usage we estimate the need of an additional year of development. The resulting start-up would initially receive B2B revenue from companies that need our solution for their cryptographic consumer product. In addition to Taler and PEP we are in discussion with developers of crypto currencies from Zug and Lausanne. Subsequently these contacts would evolve into distribution channels, and Anastasis would eventually earn money directly from its users. Cryptographic solutions which are not open to the public are not trustworthy. As seen lately with the Crypto AG. Experts recommend to only use Free and Libre Open Source Software (FLOSS) especially for cryptography. Therefore, Anastasis is licensed under the Affero GPL which will prevent other companies from creating or operating proprietary forks. Being first to market and thus the default provider in various consumer products will be a key business advantage.

### 6.2. Market review and innovation potential

There are already some key recovery or key splitting solutions on the market. For example, there is a solution from Coinbase. Coinbase is a global digital asset exchange company, providing a venue to buy and sell digital currencies. Coinbase also uses wallets

---

<sup>7</sup><https://pep.foundation/>

secured with private keys. To recover this private key the user has to provide a 12 words recovery phrase. Coinbase now offers a solution to securely deposit this recovery phrase onto the users Google Drive. The security here lies within the Google Account and the password used to encrypt the security phrase [35]. The problem here is that this approach undermines confidentiality. It exchanges a hard to guess password with a shorter and easier to guess password. The difficulty is to simultaneously assure availability and confidentiality, instead of trading one for the other. By allowing citizens to simultaneously achieve confidentiality and availability we improve their ability to exercise their right to informational self-determination.

Today information losses from security incidents are rampant, either because data is exposed (loss of confidentiality) or because users lose their data because of lacking backups (loss of availability). As seen in the study of the Global Data Protection Index 2018 [44], 76% of those interviewed had an availability incident. 1TB of data loss or 20 hours of downtime reportedly costs half a million dollars. On the other hand, loss of confidential private data can result in fines under data protection regulation, as well as a difficult to quantify loss of reputation. Prominent cases in which sometimes enormous amounts of money have been gone useless by losing the key to the digital wallet clarify the urgent need of a key recovery system like Anastasis. For example the case QuadrigaCX exchange was heavily discussed in the media when the chief executive, Gerald Cotton, unexpectedly died and left £145 million in a “cold wallet”. [6]

In some cases there is a workaround to recover a lost key, provided there is a security hole in the digital wallet software that can be exploited, but it is far from user friendly and also questions the confidentiality of data in such a system. In his article “I Forgot My PIN: An Epic Tale of Losing \$30,000 in Bitcoin” [45] Mark Frauenfelder, a former editor at WIRED and the director of research at the Institute of the Future’s Blockchain Futures Lab, writes about his experiences in losing and trying to recover his wallet key.

## **6.3. Business model canvas**

### **6.3.1. Key partners**

Our key partners for Anastasis are three entities. First the business partners, Taler Systems SA and p≡p Foundation, with whom we could already make contracts and wish to integrate our product. Second are the providers of Cloud services. To operate Anastasis with minimal cost we need the service of these providers. These providers can additionally provide us authentication services, this also minimizes the complexity of our solution since we do not have to implement these services by ourselves. Such a provider could be for example Amazon AWS, Azure, Google.

In addition to these industry partners, we also count on the continued support by the BFH for hosting and mentoring. Prof. Dubius has already agreed to serve on our advisory board, and Prof. Grothoff would be happy to serve as non-executive chairman for the company.

### **6.3.2. Key activities**

The main work of our start up is the completion of our software for commercial use. This involves the integration of different authentication methods and the integration of our application into the different consumer applications. Another key activity is the maintenance and deployment of our service.

### **6.3.3. Key resources**

Our developers need a device to work with, we agreed to the policy to “bring your own device” this means the start-up does not have to invest in hardware. To operate our application, we will need servers to provide our service, as previously mentioned we would provide our service on a Cloud provider. For the timely further development of our service and integration with various authentication providers, payment solutions and applications needing key recovery, we see an initial need for at least two fulltime employees. These developers would also be responsible for the maintenance and deployment of the application.

Additionally, the start-up needs a person who is responsible for the business of Anastasis. This employee would be responsible to find new business partners and present our application to investors. This employee might initially work only part-time. To be able to properly launch the start-up, we are hoping to find a combination of investors and grants.

### **6.3.4. Value propositions**

As mentioned earlier there are many applications which need a key recovery system. Anastasis is also a privacy friendly and transparent solution. Furthermore, Anastasis will make sure that the application is user friendly and inexpensive.

### **6.3.5. Customer relationships**

In the early stages of our start-up our customers are primary going to be business customers like Taler Systems SA, p≡p Foundation, Fraunhofer AISEC and NymTech, which all want to integrate our solution into their products. Thus, early on we will likely pursue B2B sales, lining up businesses that would want to integrate Anastasis with existing security products.

Once successful products exist in the market, our revenue should inherently shift to a B2C model, as then customers will pay for the recovery service. We may then also ourselves invest in integration of Anastasis with further software solutions to grow the business, even in domains where there is no significant business partner. This will be the case for applications where popular non-commercial solutions are freely available. An example for this domain would be consumer software that enables disk encryption.



### **6.3.6. Customer segments**

Our business customers will be primarily developers of security applications which need a way to enable end-users to securely backup end-user key material.

End-users paying for the recovery service will be all users using privacy-enhancing technologies, where the putting the user in charge of their data also burdens the user with taking care of their private keys. Specific applications include payment services including crypto-currencies and end-to-end encrypted communication services.

### **6.3.7. Cost structure**

The main cost for our start-up is the salary of our employees. We need to have two or more fulltime employees for the development and one part time employee for the business development. Additional costs for the start-up are the costs for registering a company. To provide Anastasis as a service, we expect to make use of existing public Cloud services, which also cost a little bit.

### **6.3.8. Revenue streams**

In the beginning, businesses like Taler Systems SA will pay us to operate an Anastasis server and to help them integrate our protocol with their software. Once we have many end-users utilizing Anastasis, they will have to pay directly for the service. The users have to pay a subscription fee and possibly additional fees for expensive recovery operations. For example a user might pay 0.10 CHF per month for the subscription and 0.01 CHF for each encrypted truth upload. Additionally, the user would have to pay for expensive authentication methods like video identification.

## **6.4. Project plan**

Our objective for the first year is for Anastasis to implement several authentication services, have a working cloud deployment with good monitoring, and to be integrated with various cryptographic consumer products (Figure 16). We plan to hire one developer for the integration with external authentication providers and monitoring of our cloud deployment, and a second one to focus on the integration of Anastasis with consumer products. Key milestones are the various integrations of the different authentication methods, the integration of cryptographic consumer products, and the deployment of our application. Additionally, we would always look out for new customers and clients who could benefit from Anastasis.

Activity	Month												
	6	7	8	9	10	11	12	1	2	3	4	5	6
<b>Software Development</b>													
SMS authentication	■	■											
Video indent			■	■									
Physical mail authentication					■	■							
Cloud deployment							■						
Monitoring								■	■				
Intrusion test										■	■		
Security review												■	■
<b>Business</b>													
Preparation	■												
Registration		■											
Formal agreements			■										
Integration with Taler System				■	■	■							
Agreement with PEP							■						
Integration with PEP								■	■	■			
Agreement with crypto currency Provider											■	■	■

Figure 16: Business project plan

## 7. Conclusion and outlook

Anastasis is a privacy-preserving and robust technical solution to the problem of key recovery. Open challenges remain in particular with respect to usability, as the user experience — and in particular convincing the users that their private data truly remains private with Anastasis — will be crucial for commercial success. While we have started to make plans for a graphical user interface, it was not possible to conduct actual usability studies in the scope of the thesis.

Overall, the thesis was an interesting experience for us. We learned much about software development and had our first successful B2B interactions. The Anastasis project will not be finished at the end of the thesis, but instead we plan to build a start-up to be able to launch a proper product around our work on Anastasis.

## A. REST API documentation

The server api is a RESTful API which has the following endpoints.

### Obtain Salt

#### GET /salt

Obtain the salt used by the escrow provider. Different providers will use different high-entropy salt values. The resulting provider salt is then used in various operations to ensure cryptographic operations differ by provider. A provider must never change its salt value.

#### Response:

Returns a "SaltResponse".

```
interface SaltResponse {
    // salt value, at least 128 bits of entropy
    server_salt: string;
}
```

### Obtain terms of service

#### GET /terms

Obtain the terms of service provided by the escrow provider.

#### Response:

Returns an EscrowTermsOfServiceResponse.

```
interface EscrowTermsOfServiceResponse {

    // minimum supported protocol version
    min_version: number;

    // maximum supported protocol version
    max_version: number;

    // supported authentication methods
    auth_methods: AuthenticationMethod[];

    // Payment required to maintain an account to store
    // policy documents for a month.
    // Users can pay more, in which case the storage time
    // will go up proportionally.
    monthly_account_fee: Amount;

    // Amount required per policy upload. Note that the amount is NOT
```

```

// charged additionally to the monthly_storage_fee. Instead,
// when a payment is made, the amount is divided by the policy_upload_fee
// (and rounded down) to determine how many uploads can be made
// under the associated payment identifier.
policy_upload_ratio: Amount;

// maximum policy upload size supported
policy_size_limit_in_bytes: number;

// maximum truth upload size supported
truth_size_limit_in_bytes: number;

// how long until the service expires deposited truth
// (unless refreshed via another POST)?
truth_expiration: RelativeTime;

// Payment required to upload truth. To be paid per upload.
truth_upload_fee: Amount;

// Limit on the liability that the provider is offering with
// respect to the services provided.
liability_limit: Amount;

// HTML text describing the terms of service in legalese.
// May include placeholders like "${truth_upload_fee}" to
// reference entries in this response.
tos: string;
}

interface AuthenticationMethod {
// name of the authentication method
name: string;

// Fee for accessing truth using this method
usage_fee: Amount;
}

```

## Manage Policy

This API is used by the Anastasis client to deposit or request encrypted recovery documents with the escrow provider. Generally, a client will deposit the same encrypted recovery document with each escrow provider, but provide different truth to each escrow provider.

Operations by the client are identified and authorized by `$ACCOUNT_PUB`, which should be kept secret from third parties. `$ACCOUNT_PUB` should be an account public key using the Crockford base32-encoding.

**GET** `/policy/$ACCOUNT_PUB[?version=$NUMBER]`

Get the customer's encrypted recovery document. If "version" is not specified, the server returns the latest available version. If "version" is specified, returns the policy with the respective "version". The response must begin with the nonce and an AES-GCM tag and continue with the ciphertext. Once decrypted, the plaintext is expected to contain:

- the escrow policy
- the separately encrypted master key

**Status Codes:**

- 200 OK – The escrow provider responds with an `EncryptedRecoveryDocument` object.
- 304 Not modified – The client requested the same resource it already knows.
- 400 Bad request – The `$ACCOUNT_PUB` is not an EdDSA public key.
- 402 Payment Required – The account's balance is too low for the specified operation. See the Taler payment protocol specification for how to pay.
- 403 Forbidden – The required account signature was invalid.
- 404 Not Found – The requested resource was not found.

Note that the key shares required to decrypt the master public key are not included, as for this the client needs to obtain authorization. The policy does provide sufficient information for the client to determine how to authorize requests for truth.

The client MAY provide an "If-None-Match" header with an Etag. In that case, the server MUST additionally respond with an "304" status code in case the resource matches the provided Etag.

**Anastasis-Version:** `$NUMBER` — The server must return actual version of the encrypted recovery document via this header. If the client specified a version number in the header of the request, the server must return that version. If the client did not specify a version in the request, the server returns latest version of the `EncryptedRecoveryDocument`.

**Etag:** Set by the server to the Base32-encoded SHA512 hash of the body. Used for

caching and to prevent redundancies. The server **MUST** send the Etag if the status code is 200 OK.

**If-None-Match:** If this is not the very first request of the client, this contains the Etag-value which the client has received before from the server. The client **SHOULD** send this header with every request (except for the first request) to avoid unnecessary downloads.

**Anastasis-Account-Signature:** The client must provide Base-32 encoded EdDSA signature over hash of body with `$ACCOUNT_PRIV`, affirming desire to download the requested encrypted recovery document. The purpose used **MUST** be `TALER_SIGNATURE_ANASTASIS_POLICY_DOWNLOAD` (1401).

### **POST /policy/\$ACCOUNT\_PUB**

Upload a new version of the customer's encrypted recovery document. While the document's structure is described in JSON below, the upload should just be the bytestream of the raw data (i.e. 32 bytes nonce followed by 16 bytes tag followed by the encrypted document). If request has been seen before, the server should do nothing, and otherwise store the new version. The body must begin with a nonce, an AES-GCM tag and continue with the ciphertext. The format is the same as specified for the response of the GET method. The Anastasis server cannot fully validate the format, but **MAY** impose minimum and maximum size limits.

### **Status Codes:**

- 204 No Content – The encrypted recovery document was accepted and stored. “Anastasis-Version” indicate what version was assigned to this encrypted recovery document upload by the server.
- 304 Not modified – The same encrypted recovery document was previously accepted and stored. “Anastasis-Version” header indicates what version was previously assigned to this encrypted recovery document.
- 400 Bad request – The `$ACCOUNT_PUB` is not an EdDSA public key or mandatory headers are missing. The response body **MUST** elaborate on the error using a Taler error code in the typical JSON encoding.
- 402 Payment Required – The account's balance is too low for the specified operation. See the Taler payment protocol specification for how to pay. The response body **MAY** provide alternative means for payment.
- 403 Forbidden – The required account signature was invalid. The response body may elaborate on the error.
- 409 Conflict – The If-Match Etag does not match the latest prior version known to the server.

- 413 Request Entity Too Large – The upload is too large or too small. The response body may elaborate on the error.

*If-Match*: Unless the client expects to upload the first encrypted recovery document to this account, the client should provide an Etag matching the latest version already known to the server. If this header is present, the server MUST refuse the upload if the latest known version prior to this upload does not match the given Etag.

*If-None-Match*: This header must be present and set to the SHA512 hash (Etag) of the body by the client. The client should also set the “Expect: 100-Continue” header and wait for “100 continue” before uploading the body. The server MUST use the Etag to check whether it already knows the encrypted recovery document that is about to be uploaded. The server MUST refuse the upload with a “304” status code if the Etag matches the latest version already known to the server.

*Anastasis-Policy-Signature*: The client must provide Base-32 encoded EdDSA signature over hash of body with \$ACCOUNT\_PRIV, affirming desire to upload an encrypted recovery document.

*Payment-Identifier*: Base-32 encoded 32-byte payment identifier that was included in a previous payment (see 402 status code). Used to allow the server to check that the client paid for the upload (to protect the server against DoS attacks) and that the client knows a real secret of financial value (as the kdf\_id might be known to an attacker). If this header is missing in the client’s request (or the associated payment has exceeded the upload limit), the server must return a 402 response. When making payments, the server must include a fresh, randomly-generated payment-identifier in the payment request.

```
interface EncryptedRecoveryDocument {
    // Nonce used to compute the (iv,key) pair for encryption
    // of the encrypted_compressed_recovery_document.
    nonce: [32]; //bytearray

    // Authentication tag
    aes_gcm_tag: [16]; //bytearray

    // Variable-size encrypted recovery document. After decryption,
    // this contains a gzip compressed JSON-encoded RecoveryDocument.
    // The nonce of the HKDF for this encryption must include the
    // string "ERD".
    // bytearray of undefined length
    encrypted_compressed_recovery_document: [];
}
```

```
interface RecoveryDocument {
```



```

// Account identifier at backup provider, AES-encrypted with
// the (symmetric) master_key, i.e. an URL
// https://sync.taler.net/$BACKUP_ID and
// a private key to decrypt the backup. Anastasis is oblivious
// to the details of how this is ultimately encoded.
backup_account: []; //bytearray of undefined length

// List of escrow providers and selected authentication method
methods: EscrowMethod[];

// List of possible decryption policies
policy: DecryptionPolicy[];
}

interface EscrowMethod {
// URL of the escrow provider
// (including possibly this Anastasis server)
provider_url : string;

// Name of the escrow method (e.g. security question, SMS etc.)
escrow_method: string;

// truth_seed of the escrow method (see /truth/ API below).
truth_seed: [32]; //bytearray

// Key used to encrypt the Truth this EscrowMethod is related to.
// Client has to provide this key to the server when using /truth/
truth_encryption_key: [32]; //bytearray

// Salt used to encrypt the truth on the Anastasis server.
truth_salt: [32]; //bytearray

// The challenge to give to the user (i.e. the security question
// if this is challenge-response).
// (Q: as string in base32 encoding?)
// (Q: what is the mime-type of this value?)
//
// For some methods, this value may be absent.
//
// The plaintext challenge is not revealed to the
// Anastasis server.
challenge: []; //bytearray of undefined length
}

```

```

interface DecryptionPolicy {
    // Salt included to encrypt master key share when
    // using this decryption policy.
    policy_salt: [32]; //bytearray

    // Master key, AES-encrypted with key derived from
    // salt and keyshares revealed by the following list of
    // escrow methods identified by the truth_seeds.
    encrypted_master_key: [32]; //bytearray

    // List of escrow methods identified by their truth_seed.
    truth_seeds: []; //array of truth_seed
}

```

## Manage Truth

This API is used by the Anastasis client to deposit truth or request a (encrypted) key share with the escrow provider.

An escrow method specifies an Anastasis provider and how the user should authorize themselves. The truth API allows the user to provide the (encrypted) key share to the respective escrow provider, as well as auxiliary data required for such an respective escrow method.

Operations by the client are identified and authorized by `$TRUTH_PUB`, which should be kept secret from third parties. `$TRUTH_PUB` should be a public key using the Crockford base32-encoding.

An Anastasis-server may store truth for free for a certain time period, or charge per truth operation using GNU Taler.

### POST /truth/`$TRUTH_PUB`

Upload a TruthUploadRequest-Object according to the policy the client created before (see RecoveryDocument). If request has been seen before, the server should do nothing, and otherwise store the new object.

#### Status Codes:

- 204 No content – Truth stored successfully.
- 304 Not modified – The same truth was previously accepted and stored under this `$TRUTH_PUB`. The Anastasis server must still update the expiration time for the truth when returning this response code.

- 402 Payment Required – This server requires payment to store truth per item. See the Taler payment protocol specification for how to pay. The response body MAY provide alternative means for payment.
- 409 Conflict – The server already has some truth stored under this TRUTH\_PUB. The client should check that it is generating \$TRUTH\_PUB with enough entropy.
- 412 Precondition Failed – The selected authentication method is not supported on this provider.

**Details:**

```
interface TruthUploadRequest {
    // Contains the information of an interface EncryptedKeyShare,
    // but simply as one binary block (in Crockford Base32
    // encoding for JSON).
    key_share_data: []; //bytearray

    // Key share method, i.e. "security question", "SMS", "e-mail", ...
    method: string;

    // Nonce used to compute the (iv,key) pair for encryption of the
    // encrypted_truth.
    nonce: [32]; //bytearray

    // Signature over the key_share signed with TRUTH_PRIV.
    key_share_signature: EddsaSignature;

    // Variable-size truth. After decryption,
    // this contains the ground truth, i.e. H(challenge answer),
    // phone number, e-mail address, picture, fingerprint, ...
    // **base32 encoded**.
    //
    // The nonce of the HKDF for this encryption must include the
    // string "ECT".
    encrypted_authentication_data: []; //bytearray

    // Signature over the key_share signed with TRUTH_PRIV.
    authentication_data_signature: EddsaSignature;

    // mime type of truth, i.e. text/ascii, image/jpeg, etc.
    truth_mime: string;
}
```

**GET /truth/\$TRUTH\_PUB[?response=\$RESPONSE]**

Get the stored encrypted key share. If \$RESPONSE is specified by the client, the server checks if \$RESPONSE matches the expected response specified before within the TruthUploadRequest (see encrypted\_truth). Also, the user has to provide the correct truth\_encryption\_key with every get request (see below). When \$RESPONSE is correct, the server responds with the encrypted key share. The encrypted key share is returned simply as a byte array and not in JSON format.

### Status Codes:

- 200 OK – EncryptedKeyShare is returned in body (in binary).
- 202 Accepted – The escrow provider will respond out-of-band (i.e. SMS). The body may contain human-readable instructions on next steps.
- 303 See Other – The provider redirects for authentication (i.e. video identification/WebRTC). If the client is not a browser, it should launch a browser at the URL given in the “Location” header and allow the user to re-try the operation after successful authorization.
- 402 Payment Required – The service requires payment for access to truth. See the Taler payment protocol specification for how to pay. The response body MAY provide alternative means for payment.
- 403 Forbidden – The server requires a valid “response” to the challenge associated with the \$TRUTH\_PUB.
- 404 Not Found – The server does not know any truth under the given TRUTH\_PUB.
- 503 Service Unavailable – Server is out of Service.

**Truth-Decryption-Key:** Key used to encrypt the truth (see encrypted\_truth within TruthUploadRequest) and which has to be provided by the user. The key is stored with the according EscrowMethod. The server needs this key to get the info out of TruthUploadRequest needed to verify the \$RESPONSE.

**authentication\_data\_signature:** The client must provide Base-32 encoded EdDSA signature over the hash of the encrypted\_authentication\_data with \$TRUTH\_PRIV.

**key\_share\_signature:** The client must provide Base-32 encoded EdDSA signature over hash of the encrypted\_key\_key\_share with \$TRUTH\_PRIV.

### Details:

```
interface EncryptedKeyShare {
    // Nonce used to compute the decryption (iv,key) pair.
    nonce_i: [32]; //bytearray

    // Encrypted key-share in base32 encoding.
    // After decryption, this yields a KeyShare. Note that
```

```

// the KeyShare MUST be encoded as a fixed-size binary
// block (instead of in JSON encoding).
//
// HKDF for the key generation must include the
// string "eks" as salt. Depending on the method,
// the HKDF may additionally include
// bits from the response (i.e. some hash over the
// answer to the security question)
encrypted_key_share_i: [32]; //bytearray
}

interface KeyShare {
// Key material to concatenate with policy_salt
// and KDF to derive the key to decrypt the master key.
key_share: [32]; //bytearray

// Signature over the key_share signed with TRUTH\_PRIV.
account_sig: EddsaSignature;
}

```

## **B. Work journal**

### **Meeting 20.02.2020**

Present at the Meeting were: Dominik Meister, Dennis Neufeld and Christian Grothoff.

#### **Reflection**

It was the first meeting of the Bachelor's thesis. The main focus was on the planing of the project and discussing the next steps. The conclusion was there is a lot of work to do and we need to focus from the beginning.

#### **Next Steps**

The next meeting will be at the 27.2. Until this meeting drafts of several project documents should be completed. Task schedule, project document, work journal, business plan, abstract, motivation. Additionally a draft for the BRIDGE funding proposal should be written.

### **Meeting 27.02.2020**

Present at the Meeting were: Dominik Meister, Dennis Neufeld and Christian Grothoff.

#### **Reflection**

The main topic of the meeting was the BRIDGE proposal which is due at the 9th of March. Additionally we discussed the documents and plan we created.

#### **Next Steps**

The next steps are the completion of the BRIDGE proposal.

### **Meeting 05.03.2020**

Present at the Meeting were: Dominik Meister, Dennis Neufeld and Christian Grothoff.

#### **Reflection**

In this meeting the main topic was the finalization of the BRIDGE proposal. We also discussed the related work and Business model of Anastasis. Through the extensive work on the BRIDGE proposal the development has not continued very fast. But we already could write key parts for the Bachelor thesis.

## **Next Steps**

Next is the completion and delivery of the BRIDGE proposal.

## **Meeting 12.03.2020**

Present at the Meeting were: Dominik Meister, Dennis Neufeld and Christian Grothoff.

## **Reflection**

The BRIDGE proposal was sent and we can now focus on the development. We did not estimate that the proposal would be this time consuming. We are now a bit behind our task schedule.

## **Next Steps**

Completion of the Anastasis Client API tests and start of the implementation of the crypto library.

## **Meeting 19.03.2020**

Present at the Meeting were: Dominik Meister, Dennis Neufeld and Christian Grothoff.

## **Reflection**

We ran into problems while testing the Anastasis client API, the development is slow at the moment because the bugfixing takes a lot of time. We also have made some design mistakes in the crypto API which needed to be fixed.

## **Next Steps**

Completion of the Anastasis Client API tests and continue on the implementation of the crypto library.

## **Meeting 26.03.2020**

Present at the Meeting were: Dominik Meister, Dennis Neufeld and Christian Grothoff.

## **Reflection**

We ran into a lot of problems and decided to make more frequent meetings. We need to fix some design issues, the imports of the different files are done wrong. Additionally we need to be more clear with the names. We need to focus more on the implementation and be more precise with the documentation.

## **Next Steps**

Implementation of the Crypto library, fix issues mentioned.

## **Meeting 30.03.2020**

Present at the Meeting were: Dominik Meister, Dennis Neufeld and Christian Grothoff.

## **Reflection**

We could fix the issues from the last meetings and are now in the development of the crypto library. We had some problems with pointers which we could discuss and fix. We are happy that we can see progress.

## **Next Steps**

Implementation of the Crypto library, finishing API.

## **Meeting 02.04.2020**

Present at the Meeting were: Dominik Meister, Dennis Neufeld and Christian Grothoff.

## **Reflection**

Dennis is still fixing issues with the API communication, the process is very time consuming and we are pretty behind. Dominik was sick for some days and was not able to work for the project. We are now pretty behind our task schedule and need to work harder.

## **Next Steps**

Implementation of the Crypto library, finishing API.

## **Meeting 06.04.2020**

Present at the Meeting were: Dominik Meister, Dennis Neufeld and Christian Grothoff.

## **Reflection**

We could finally fix the API's and can now focus on the planned components. We also found some bugs in payment process we need to fix.

## **Next Steps**

Implementation Crypto library and testing



## **Meeting 09.04.2020**

Present at the Meeting were: Dominik Meister, Dennis Neufeld and Christian Grothoff.

### **Reflection**

We found some errors in our specification regarding the Key Shares. We are currently still in the development of Crypto library tests. The development is very slow because we have some problems with the pointers in C.

### **Next Steps**

Implementation Crypto library tests, work on Anastasis client

## **Meeting 13.04.2020**

Present at the Meeting were: Dominik Meister, Dennis Neufeld and Christian Grothoff.

### **Reflection**

We are still in the development of the Crypto library tests. The problems are mostly the handling of the data. We had some problems with the datatypes and the conversions.

### **Next Steps**

Implementation Crypto library testing, work on the Anastasis client.

## **Meeting 16.04.2020**

Present at the Meeting were: Dominik Meister, Dennis Neufeld and Christian Grothoff.

### **Reflection**

We could not finish the crypto library jet and had problems with the json objects we need to handle inside the crypto library. The development of the Anastasis client is also slow, since it is a very complex part which needs to integrate all other components.

### **Next Steps**

Finish Crypto library testing, implementation Anastasis client

## **Meeting 24.04.2020**

Present at the Meeting were: Dominik Meister, Dennis Neufeld and Christian Grothoff.

## **Reflection**

We still have some bugs in the crypto library. We should focus that the application is not crashing if something unexpected happens, the application should continue. Additionally there were some security issues in the code we need to fix. The development of this component is very complex and needs a lot of time, we hope that we soon can finish the crypto library. Also the development of the Anastasis client is finished we can now start with the testing.

## **Next Steps**

Finish Crypto library testing, implementation Anastasis client tests

## **Meeting 27.04.2020**

Present at the Meeting were: Dominik Meister, Dennis Neufeld and Christian Grothoff.

## **Reflection**

After some final optimization the crypto library of Anastasis is finished. We can now focus on the tests of the client API. This will show if the whole flow of the application works as intended.

## **Next Steps**

Implementation Anastasis client tests

## **Meeting 30.04.2020**

Present at the Meeting were: Dominik Meister, Dennis Neufeld and Christian Grothoff.

## **Reflection**

The testing of the Anastasis client API is progressing slowly. We could find alot of bugs in the other components we were not able to see with our previous testing. We needed to fix some of the protocol flows. We hope that we can finish the client as soon as possible since we also need to implement the authentication procedure and the command line application.

## **Next Steps**

Implementation Anastasis client tests and start working on the authentication backend

## **Meeting 04.05.2020**

Present at the Meeting were: Dominik Meister, Dennis Neufeld and Christian Grothoff.

### **Reflection**

We continued the work on the Anastasis client API and the authentication backend, we still found problems in the other components. To finish the Anastasis client we will need the authentication backend. So we decided to implement the most basic authentication, secure question. We also still have some issues with our naming conventions which are not always clear.

### **Next Steps**

Finish implementation Anastasis client tests and authentication backend

## **Meeting 07.05.2020**

Present at the Meeting were: Dominik Meister, Dennis Neufeld and Christian Grothoff.

### **Reflection**

We could finish the authentication backend and now need to implement the client logic for the authentication. We also need to finish the client tests. We have roughly one month left to finish the project, we started to think that we can't develop a complex authentication method. We planned that we first will finish the rest and afterwards look if we have time to implement a different authentication method.

### **Next Steps**

Finish client API and tests

## **Meeting 11.05.2020**

Present at the Meeting were: Dominik Meister, Dennis Neufeld and Christian Grothoff.

### **Reflection**

In the last couple days we could make good progress we managed to nearly finish the Anastasis client API tests. For the most part the components are working. We think that we can finish this project within the time without the complex authentication method.

### **Next Steps**

Finish client API and tests

## **Meeting 14.05.2020**

Present at the Meeting were: Dominik Meister, Dennis Neufeld and Christian Grothoff.

### **Reflection**

We are still behind in our development. Nevertheless, industry interest suggests we should prepare a business pitch.

### **Next Steps**

finish client API

## **Meeting 18.05.2020**

Present at the Meeting were: Dominik Meister, Dennis Neufeld and Christian Grothoff.

### **Reflection**

The last couple of days were quite stressful but we managed to complete the Anastasis client tests. This means our application flow is working. This is a huge relief.

### **Next Steps**

Finish business pitch, start developing Anastasis CLI, write bachelor book, create bachelor poster

## **Meeting 21.05.2020**

Present at the Meeting were: Dominik Meister, Dennis Neufeld and Christian Grothoff.

### **Reflection**

The development of the Anastasis CLI went very fast, since all the other components are working correctly. The Anastasis splitter and assembler are nearly finished. We also created the bachelor book article and the poster. Both of these still need some adjustments.

### **Next Steps**

Finish Anastasis splitter and assembler, start to finish documentation, fix book and poster

## **Meeting 28.05.2020**

Present at the Meeting were: Dominik Meister, Dennis Neufeld and Christian Grothoff.

### **Reflection**

We nearly could finish the Anastasis CLI and can now start to focus on the documentation. We already have a lot of documentation available which needs to be put together in one document. Additionally the book abstract and the poster are finished and we could deliver them.

### **Next Steps**

Work on documentation

## **Meeting 04.06.2020**

Present at the Meeting were: Dominik Meister, Dennis Neufeld and Christian Grothoff.

### **Reflection**

There is only one week left, our document is nearly finished. We discussed which last sections need to be added. The thesis overall is now in a nearly finished state, there are some minor problems with the illustrations and the text which should be easy fixed.

### **Next Steps**

Fix illustrations, rework client client documentation

## **Meeting 08.06.2020**

Present at the Meeting were: Dominik Meister, Dennis Neufeld and Christian Grothoff.

### **Reflection**

This is the second last meeting of our thesis. We discussed the last changes which need to be done. The text is completed, we decided that we could add more illustrations to give a better understanding of the document. We are very proud of our work and think that we have done a good job.

### **Next Steps**

Add illustration for key flow, rework some minor inconsistencies

## **Meeting 11.06.2020**

Present at the Meeting were: Dominik Meister, Dennis Neufeld and Christian Grothoff.

### **Reflection**

This was the last meeting of our bachelor thesis. We fixed the last pieces in the documentation and sent the thesis. We are very happy with the final result.

### **Next Steps**

-

## Glossary

**account key** A public-private key pair used to sign and authenticate the encrypted policy document upload.

**authentication method** An authentication method specifies how the user should convince the escrow provider that he is authorized to get a key share.

**challenge** A challenge is a data structure which holds information about a user authentication for a escrow provider.

**core secret** The core secret is the data which the user wants to protect with Anastasis.

**escrow provider** An escrow provider is referred to servers which operate Anastasis.

**kdf id** The kdf id is an Argon2 hash over the user's unforgettable password.

**key share** A key share is a random byte sequence which is combined with other key shares to create a policy key.

**master key** The master key is a randomly generated key which is used to encrypt the user's core secret.

**policy** A policy is a list of challenges which need to be solved to recover the core secret.

**policy key** Every policy holds a separate policy key which is built through the combination of the key shares. The policy key is used to encrypt the master key.

**recovery document** A data structure which contains a set of policies and challenges.

**truth** A truth is a data structure which defines how a user authentication is performed, it also contains the key share which is released upon successful authentication.

**truth key** A public-private key pair used to sign and authenticate the truth upload.

**truth seed** A nonce used to generate the key material to sign the truth upload.

## References

- [1] B. Jérôme, B. D. Angelina, B. H. Esther, and K. ZH, “Ahv-nummer als einheitlicher, organisationsübergreifender personenidentifikator,” 2015.
- [2] S. Garfinkel, *PGP: pretty good privacy.* ” O’Reilly Media, Inc.”, 1995.
- [3] (2020). “Welcome to p p documentation!” pEp Security SA, [Online]. Available: <https://www.pep.security/docs/> (visited on 06/06/2020).
- [4] G. Caronni, “Walking the web of trust,” in *Proceedings IEEE 9th International Workshops on Enabling Technologies: Infrastructure for Collaborative Enterprises (WET ICE 2000)*, IEEE, 2000, pp. 153–158.
- [5] Y. Liu, R. Li, X. Liu, J. Wang, L. Zhang, C. Tang, and H. Kang, “An efficient method to enhance bitcoin wallet security,” in *2017 11th IEEE International Conference on Anti-counterfeiting, Security, and Identification (ASID)*, IEEE, 2017, pp. 26–29.
- [6] A. Cuthbertson. (2019). “Bitcoin: Millions of dollars of cryptocurrency ‘lost’ after man dies with only password,” INDEPENDENT, [Online]. Available: <https://www.independent.co.uk/life-style/gadgets-and-tech/news/bitcoin-exchange-quadrigacx-password-cryptocurrency-scam-a8763676.html> (visited on 03/07/2020).
- [7] (2020). “Bip 32 - hierarchical deterministic wallets,” Bitcoin, [Online]. Available: <https://github.com/bitcoin/bips/blob/master/bip-0032/derivation.png> (visited on 06/06/2020).
- [8] S. Bajikar, “Trusted platform module (tpm) based security on notebook pcs-white paper,” *Mobile Platforms Group Intel Corporation*, vol. 1, p. 20, 2002.
- [9] S. P. Vadhan *et al.*, “Pseudorandomness,” *Foundations and Trends® in Theoretical Computer Science*, vol. 7, no. 1–3, pp. 1–336, 2012.
- [10] J. B. Nielsen, “A threshold pseudorandom function construction and its applications,” in *Annual International Cryptology Conference*, Springer, 2002, pp. 401–416.
- [11] O. Goldreich, S. Goldwasser, and S. Micali, “How to construct random functions,” *J. ACM*, vol. 33, no. 4, pp. 792–807, Aug. 1986, ISSN: 0004-5411. DOI: 10.1145/6490.6503. [Online]. Available: <https://doi.org/10.1145/6490.6503>.
- [12] B. Preneel, “The state of cryptographic hash functions,” in *Lectures on Data Security: Modern Cryptology in Theory and Practice*, I. B. Damgård, Ed. Berlin, Heidelberg: Springer Berlin Heidelberg, 1999, p. 158, ISBN: 978-3-540-48969-6. DOI: 10.1007/3-540-48969-X\_8. [Online]. Available: [https://doi.org/10.1007/3-540-48969-X\\_8](https://doi.org/10.1007/3-540-48969-X_8).
- [13] R. Sobti and G. Geetha, “Cryptographic hash functions: A review,” *International Journal of Computer Science Issues (IJCSI)*, vol. 9, no. 2, p. 462, 2012.



- [14] S. Ramanujam and M. Karuppiah, “Designing an algorithm with high avalanche effect,” *IJCSNS International Journal of Computer Science and Network Security*, vol. 11, no. 1, pp. 106–111, 2011.
- [15] S. Gueron, S. Johnson, and J. Walker, “Sha-512/256,” in *2011 Eighth International Conference on Information Technology: New Generations*, IEEE, 2011, pp. 354–358.
- [16] M. Bellare, R. Canetti, and H. Krawczyk, “Message authentication using hash functions: The hmac construction,” *RSA Laboratories’ CryptoBytes*, vol. 2, no. 1, pp. 12–15, 1996.
- [17] H. Krawczyk, “Cryptographic extraction and key derivation: The hkdf scheme,” in *Annual Cryptology Conference*, Springer, 2010, pp. 631–648.
- [18] S. M. Trimberger, *Field-programmable gate array technology*. Springer Science & Business Media, 2012.
- [19] R. U. Madurawe, *Alterable application specific integrated circuit (asic)*, US Patent 7,064,579, Jun. 2006.
- [20] A. Biryukov, D. Dinu, and D. Khovratovich, “Argon2: New generation of memory-hard functions for password hashing and other applications,” in *2016 IEEE European Symposium on Security and Privacy (EuroS&P)*, IEEE, 2016, pp. 292–302.
- [21] M. Stamp, “Once upon a time-memory tradeoff,” *San Jose State University, Department of Computer Science*, 2003.
- [22] A. Shamir, “How to share a secret,” *Communications of the ACM*, vol. 22, no. 11, pp. 612–613, 1979.
- [23] T. P. Pedersen, “Non-interactive and information-theoretic secure verifiable secret sharing,” in *Annual international cryptology conference*, Springer, 1991, ch. 0, pp. 129–140.
- [24] P. Feldman, “A practical scheme for non-interactive verifiable secret sharing,” in *28th Annual Symposium on Foundations of Computer Science (sfcs 1987)*, IEEE, 1987, pp. 427–438.
- [25] T. P. Pedersen, “Non-interactive and information-theoretic secure verifiable secret sharing,” in *Annual international cryptology conference*, Springer, 1991, ch. 5.2, pp. 129–140.
- [26] A. Ometov, S. Bezzateev, N. Makitalo, S. Andreev, T. Mikkonen, and Y. Koucheryavy, “Multi-factor authentication: A survey,” *Cryptography*, vol. 2, no. 1, p. 1, 2018.
- [27] S. Z. Syed Idrus, E. Cherrier, C. Rosenberger, and J.-J. Schwartzmann, “A review on authentication methods,” *Australian Journal of Basic and Applied Sciences*, vol. 7, no. 5, pp. 95–107, 2013. [Online]. Available: <https://hal.archives-ouvertes.fr/hal-00912435>.
- [28] M. Just, “Designing and evaluating challenge-question systems,” *IEEE Security & Privacy*, vol. 2, no. 5, pp. 32–39, 2004.

- [29] C. Mulliner, R. Borgaonkar, P. Stewin, and J.-P. Seifert, “Sms-based one-time passwords: Attacks and defense,” in *International Conference on Detection of Intrusions and Malware, and Vulnerability Assessment*, Springer, 2013, pp. 150–159.
- [30] K. Rieck, P. Stewin, and J.-P. Seifert, *Detection of Intrusions and Malware, and Vulnerability Assessment: 10th International Conference, DIMVA 2013, Berlin, Germany, July 18-19, 2013. Proceedings*. Springer, 2013, vol. 7967.
- [31] (2020). “Forgot password cheat sheet,” OWASP Foundation, [Online]. Available: [https://cheatsheetseries.owasp.org/cheatsheets/Forgot\\_Password\\_Cheat\\_Sheet.html](https://cheatsheetseries.owasp.org/cheatsheets/Forgot_Password_Cheat_Sheet.html) (visited on 06/05/2020).
- [32] N. Pohlmann, J.-H. Frintrop, R. Widdermann, and T. Ziegler, “Wenn der softbot menschliche identität bestätigt. videoident-verfahren ii: Die technik,” 2017.
- [33] E. Pagnin and A. Mitrokotsa, “Privacy-preserving biometric authentication: Challenges and directions,” *Security and Communication Networks*, vol. 2017, 2017.
- [34] S. Krempel. (2014). “Ccc-tüftler hackt merkels iris und von der leyens fingerabdruck,” heise online, [Online]. Available: <https://www.heise.de/security/meldung/31C3-CCC-Tueftler-hackt-Merkels-Iris-und-von-der-Leyens-Fingerabdruck-2506929.html> (visited on 03/07/2020).
- [35] (2020). “Backup your encrypted private keys on google drive and icloud with coinbase wallet,” Coinbase, [Online]. Available: <https://blog.coinbase.com/backup-your-private-keys-on-google-drive-and-icloud-with-coinbase-wallet-3c3f3fdc86dc> (visited on 06/06/2020).
- [36] E. B. Parag Chatterjee and A. Nath, *Applied Approach to Privacy and Security for the Internet of Things*. IGI Global, in print.
- [37] M. Marlinspike, “Ssl and the future of authenticity,” *Black Hat USA*, vol. 6, 2011.
- [38] S. Josefsson and I. Liusvaara, “Edwards-curve digital signature algorithm (eddsa),” in *Internet Research Task Force, Crypto Forum Research Group, RFC*, vol. 8032, 2017.
- [39] S. Heron, “Advanced encryption standard (aes),” *Network Security*, vol. 2009, no. 12, pp. 8–12, 2009.
- [40] (2020). “Gnu taler: Features,” Taler Systems SA, [Online]. Available: <https://taler.net/en/features.html> (visited on 06/02/2020).
- [41] (2020). “Postgresql: The world’s most advanced open source relational database,” The PostgreSQL Global Development Group, [Online]. Available: <https://www.postgresql.org/> (visited on 06/02/2020).
- [42] (2020). “Libcurl - the multiprotocol file transfer library,” Curl, [Online]. Available: <https://curl.haxx.se/libcurl/> (visited on 06/02/2020).
- [43] (2020). “Gnu libmicrohttpd,” GNU project, [Online]. Available: <https://www.gnu.org/software/libmicrohttpd/> (visited on 06/02/2020).

- [44] (2018). “Global data protection index 2018 – key findings,” Dell EMC., [Online]. Available: <https://www.delltechnologies.com/content/dam/uwaem/production-design-assets/en/gdpi/assets/infographics/dell-gdpi-vb-key-findings-deck.pdf> (visited on 03/07/2020).
- [45] M. Frauenfelder. (2017). “I forgot my pin’: An epic tale of losing \$30,000 in bitcoin,” WIRED, [Online]. Available: <https://www.wired.com/story/i-forgot-my-pin-an-epic-tale-of-losing-dollar30000-in-bitcoin/> (visited on 03/07/2020).